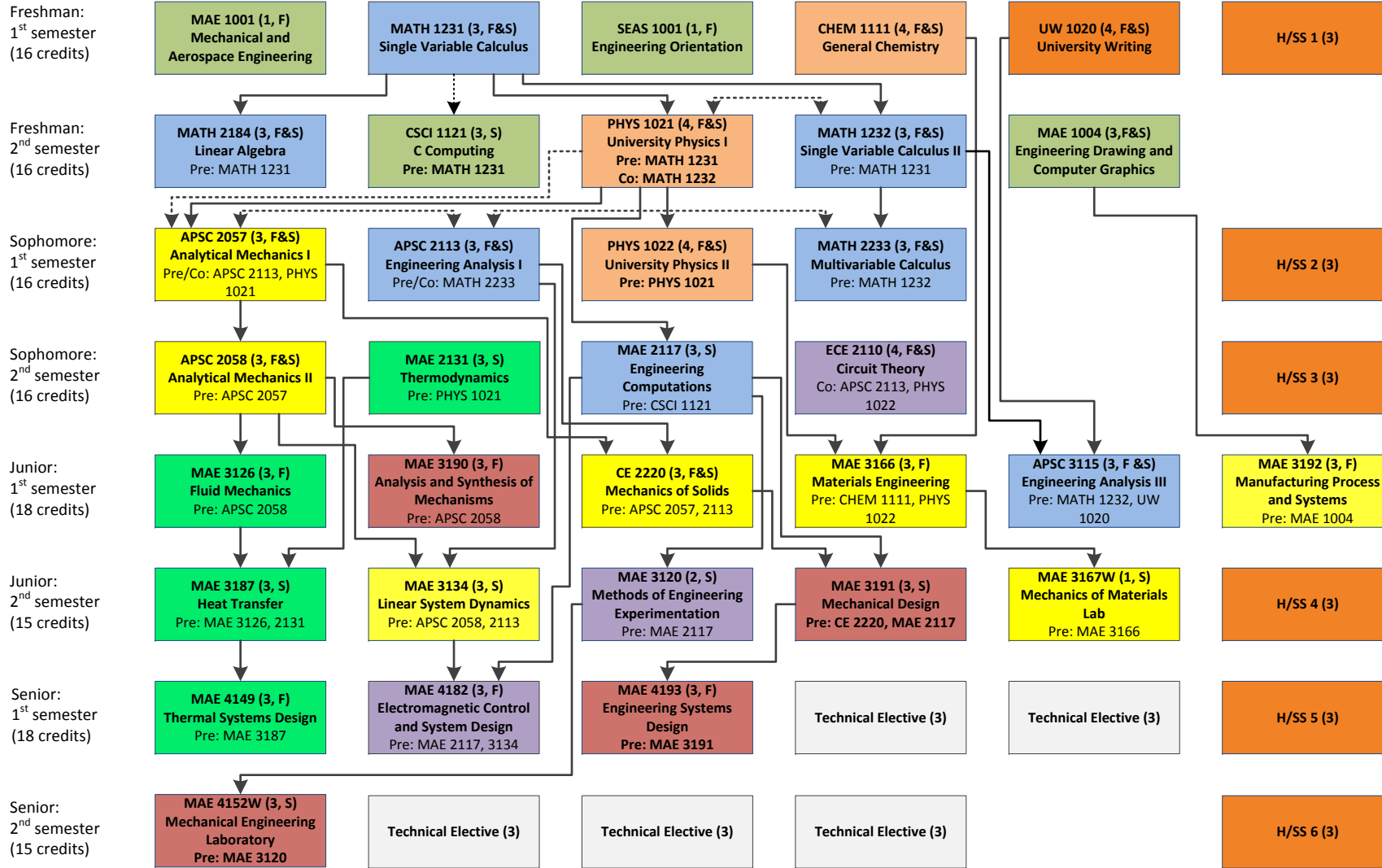


# Mechanical Engineering Curriculum (BSME Degree)



**Color Code:**

- Basic Science
- Mathematics
- Humanities/Social Sciences, Writing
- Engineering Orientation, Drawing, Programming
- Mechanical, Materials, Processes
- Thermal/Fluid Sciences
- Electrical, Measurements, Controls
- Design Courses

F = fall semester, S = spring semester

Pre = Pre-requisite →

Co = Co-requisite - - - - ->

Pre/Co = Pre-requisite or Co-requisite

H/SS = Humanities / Social Sciences

**Phil 2135 is required in place of a humanities elective**

ASME membership recommended

FE Exam recommended in the senior year

**Technical Electives:**

Approved courses: The MAE 3000, 4000, or 6000 level courses, except that the following are excluded: MAE 3171, MAE 4172, MAE 6298, MAE 6299, MAE 6999. Technical courses from other departments (3000, 4000, or 6000 level) may be selected subject to approval of the faculty advisor and department chair. Students must receive approval *before* registering for the selected course. The selected course must be listed in the student's advising form (SEAS Undergraduate Advising Form).

*\* Students must have completed the prerequisites for the selected courses.*