



T U L S A

PUBLIC SCHOOLS

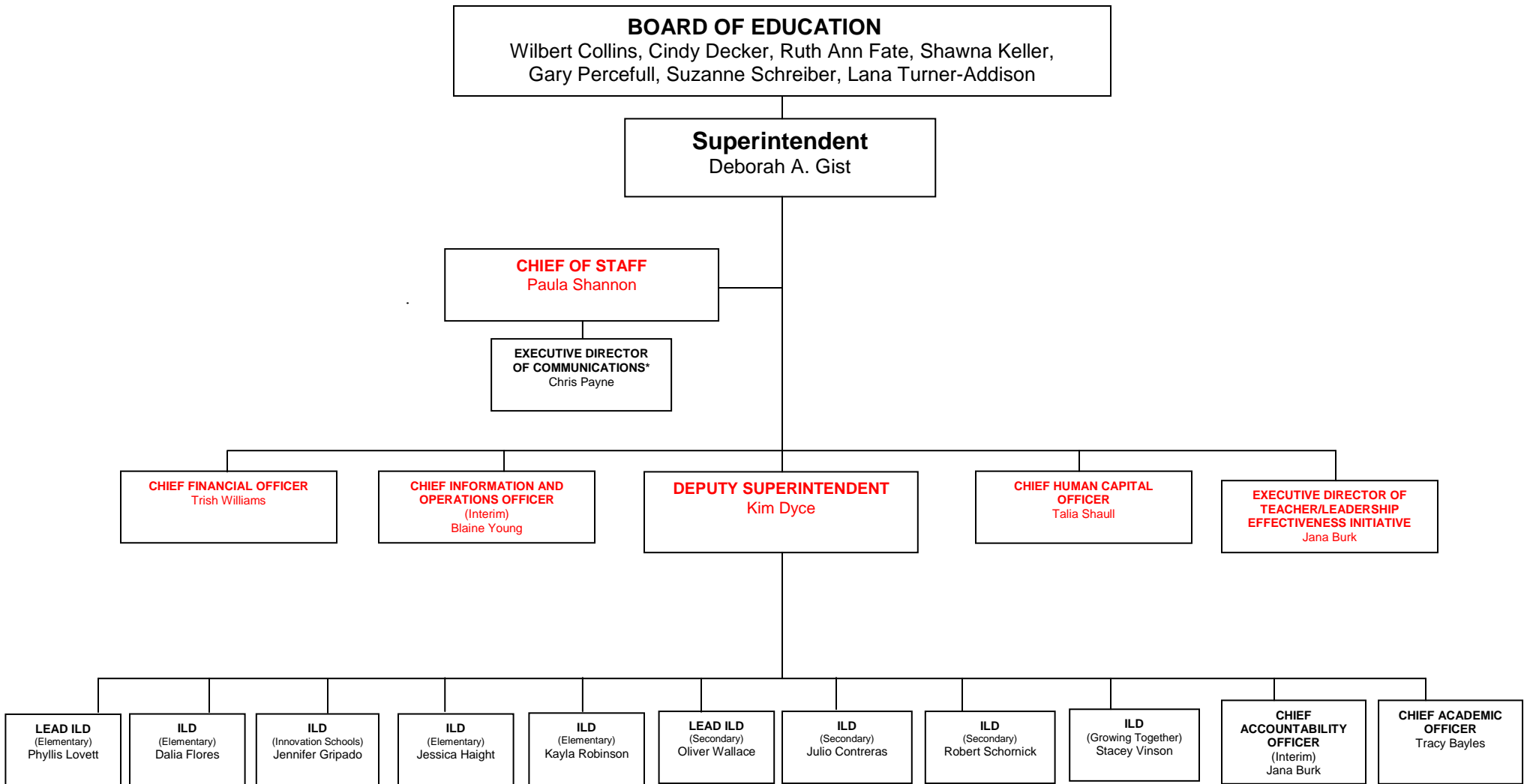
**ORGANIZATIONAL CHARTS
2015-2016**

TULSA PUBLIC SCHOOLS ORGANIZATIONAL CHARTS

TABLE OF CONTENTS

	PAGE NUMBER
BOARD OF EDUCATION	1
DISTRICT CABINET/EXECUTIVE STAFF	1
OFFICE OF THE SUPERINTENDENT	2
➤ TEACHER/LEADERSHIP EFFECTIVENESS INITIATIVE	2
❖ FINANCIAL SERVICES	3-8
➤ ACCOUNTING	4
▪ FIXED ASSETS	4
➤ BOND PROJECTS / ENERGY MANAGEMENT	3
➤ BUDGET	3
➤ FEDERAL PROGRAMS AND SPECIAL PROJECTS	5
▪ GRANT COMPLIANCE	5
▪ GRANT WRITER	5
▪ TITLE I	5
➤ FINANCE / TREASURER	6
▪ FACILITIES UTILIZATION	6
▪ SCHOOL ACTIVITY	6
➤ MATERIALS MANAGEMENT (PURCHASING)	7
▪ MAIL SERVICES	7
▪ WAREHOUSE	7
➤ PAYROLL	8
❖ HUMAN CAPITAL	9
➤ CERTIFIED TALENT	9
➤ COMPENSATION AND BENEFITS	9
➤ HUMAN RIGHTS	9
➤ SUPPORT TALENT	9
❖ INFORMATION AND OPERATIONS	10-16
➤ CAMPUS POLICE AND SECURITY SERVICES	12
➤ CHILD NUTRITION SERVICES	13
➤ MAINTENANCE AND PLANT OPERATIONS	14-15
➤ TRANSPORTATION	16
INFORMATION TECHNOLOGY	11
➤ BUSINESS SERVICES	11
➤ CLIENT SERVICES	11
➤ INFORMATION SERVICES (APPLICATIONS)	11
➤ OPERATIONS AND SUPPORT	11
➤ SERVICE DESK	11

	PAGE NUMBER
CHIEF OF STAFF	17
➤ COMMUNICATIONS	17
➤ MARKETING	17
➤ SCHOOL AND COMMUNITY RELATIONS	17
➤ STAFF ATTORNEY	17
DEPUTY SUPERINTENDENT	18-32
STUDENT AND FAMILY SUPPORTS	18
▪ POSITIVE BEHAVIOR SUPPORT	18
➤ HEALTH SERVICES	18
➤ STUDENT AND CONSTITUENT SERVICES	18
▪ SAFE SCHOOLS	18
❖ INSTRUCTIONAL LEADERSHIP DIRECTORS	19-27
➤ SECONDARY SCHOOL STUDENT ACTIVITIES/ATHLETICS	23
▪ HELMZAR CHALLENGE COURSE	23
❖ ACCOUNTABILITY	28
▪ DISTRICT REGISTRARS	28
▪ STUDENT TRANSFERS	28
➤ EDUCATIONAL INDICATORS	28
➤ PORTFOLIO MANAGEMENT	28
❖ ACADEMIC SERVICES	29-32
CURRICULUM AND INSTRUCTION	30
▪ DUAL ENROLLMENT	30
▪ FINE ARTS	30
▪ GIFTED AND TALENTED	30
▪ INDIAN EDUCATION	30
➤ COLLEGE AND CAREER READINESS	30
➤ EARLY CHILDHOOD SERVICES	30
▪ BEFORE AND AFTER CARE	30
➤ INSTRUCTIONAL IMPLEMENTATION	30
➤ INSTRUCTIONAL MEDIA AND LIBRARY SERVICES	30
➤ TITLE III	30
▪ DUAL LANGUAGE	30
▪ LANGUAGE INTERPRETATION	30
ORGANIZATIONAL AND PROFESSIONAL LEARNING	29
▪ LEADERSHIP DEVELOPMENT	29
▪ TEACHER DEVELOPMENT	29
SPECIAL EDUCATION AND STUDENT SERVICES	31-32
▪ SPECIAL EDUCATION COMPLIANCE MONITORING	31
▪ SPECIAL EDUCATION COORDINATORS	32

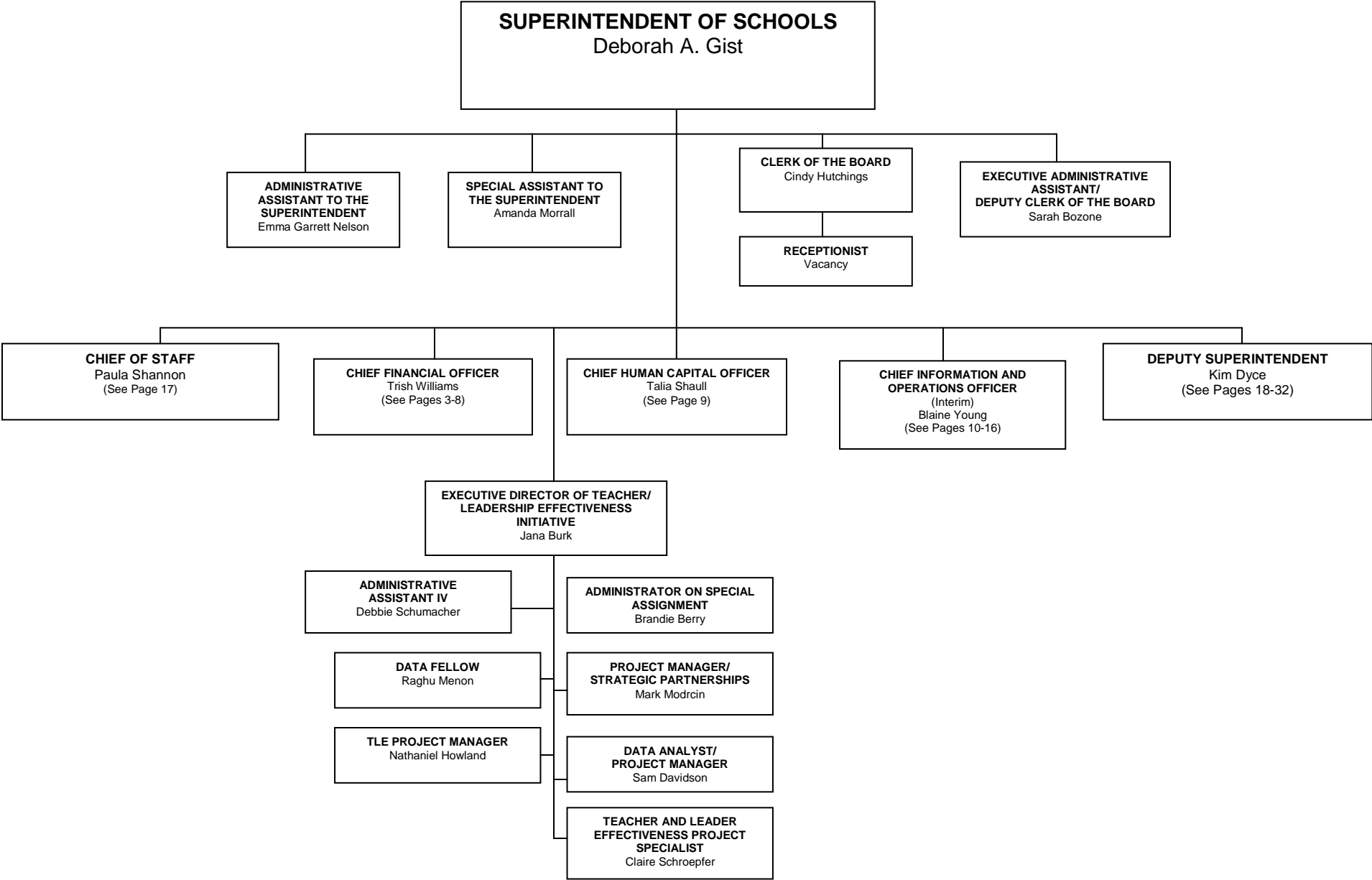


CABINET

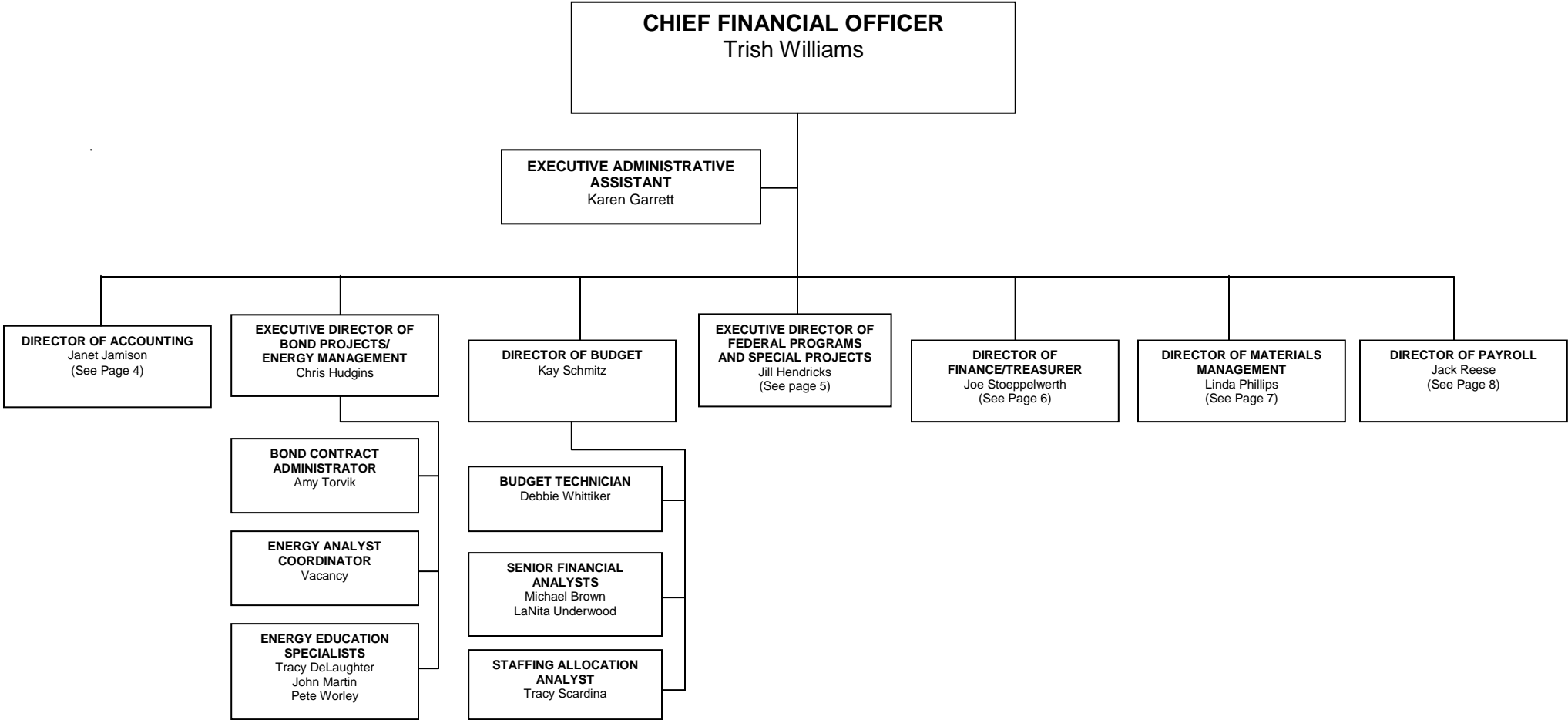
EXECUTIVE STAFF (includes **Cabinet**)

*ad hoc member

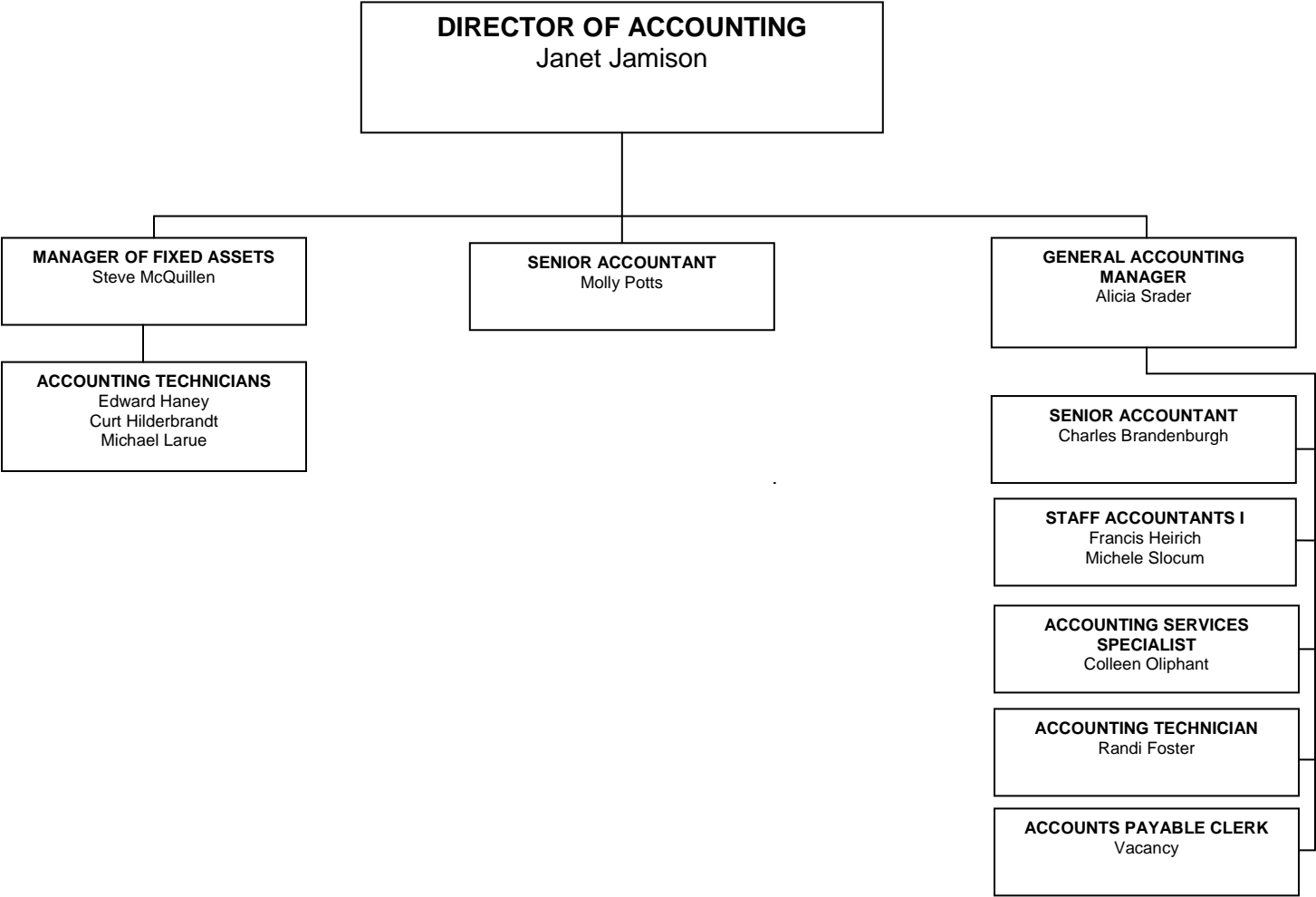
SUPERINTENDENT



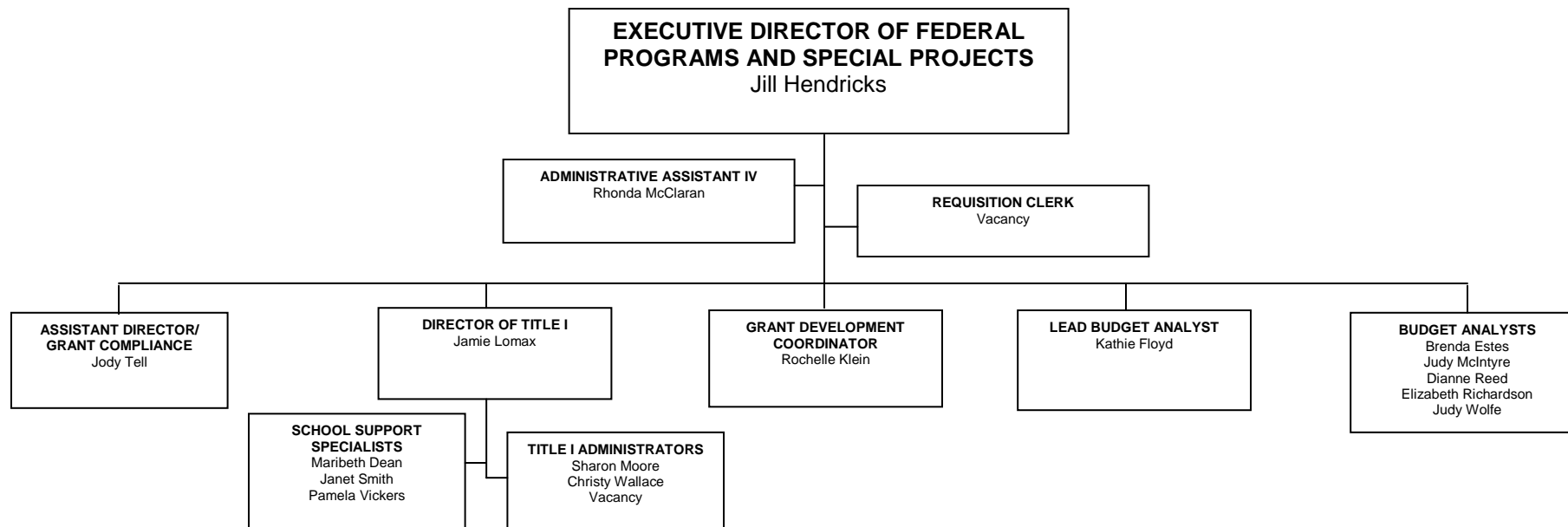
FINANCIAL SERVICES



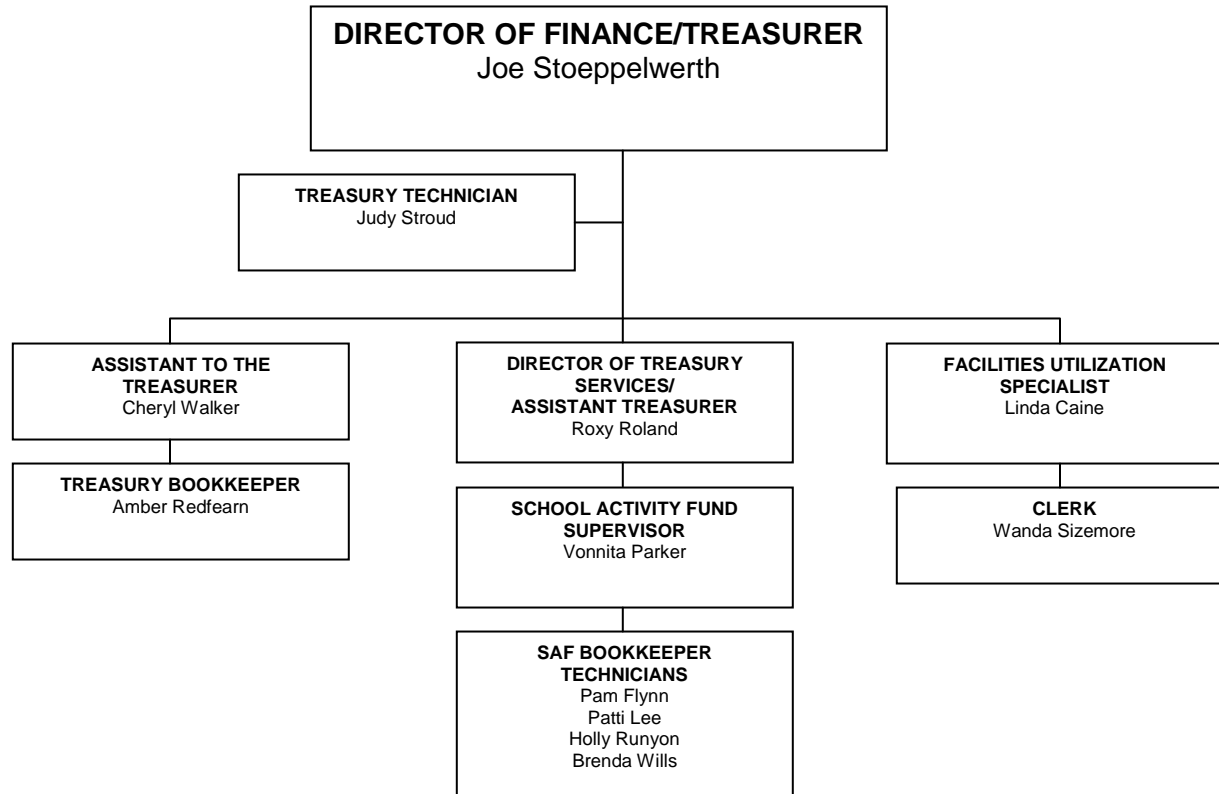
ACCOUNTING OFFICE



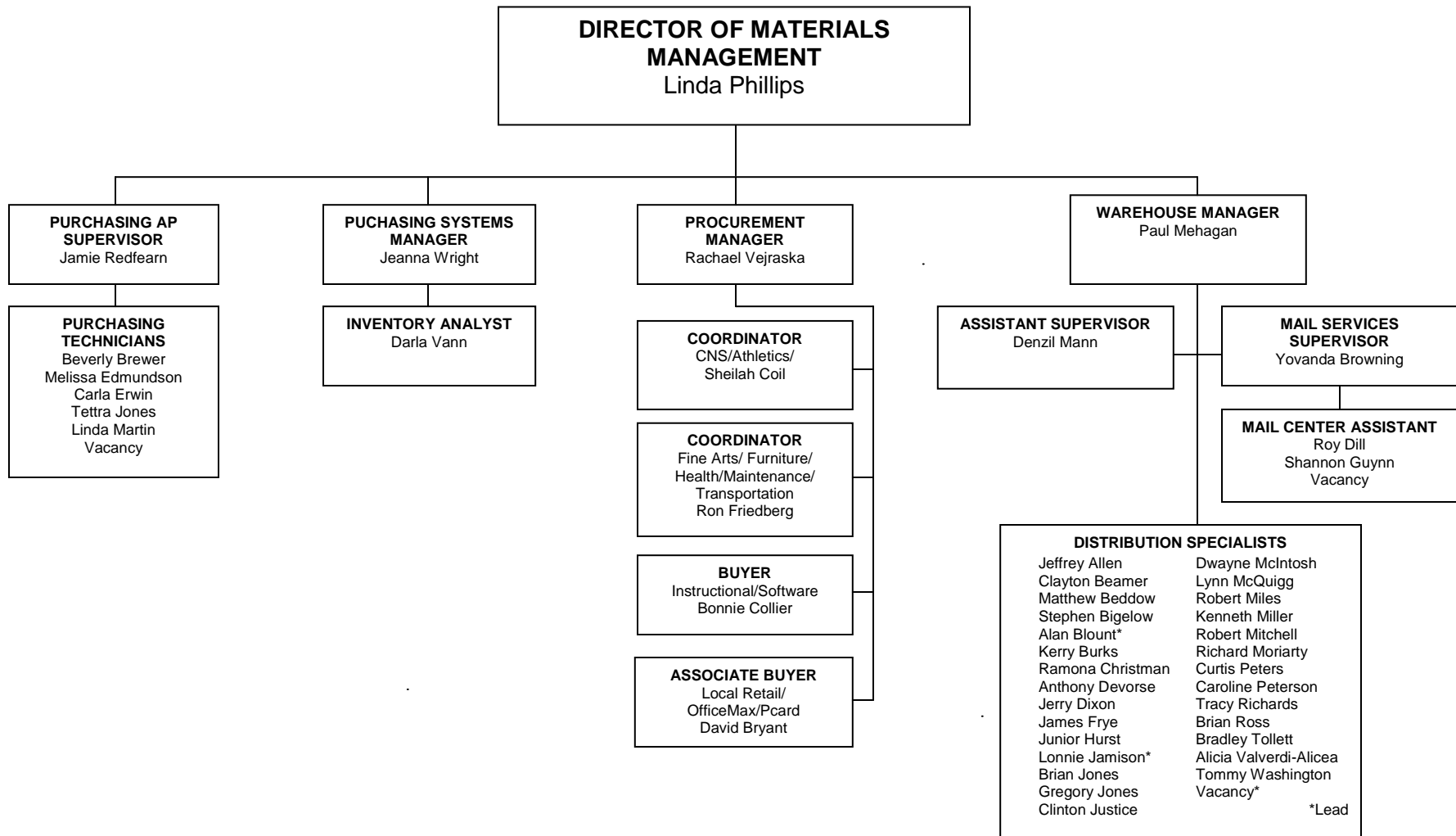
FEDERAL PROGRAMS AND SPECIAL PROJECTS OFFICE



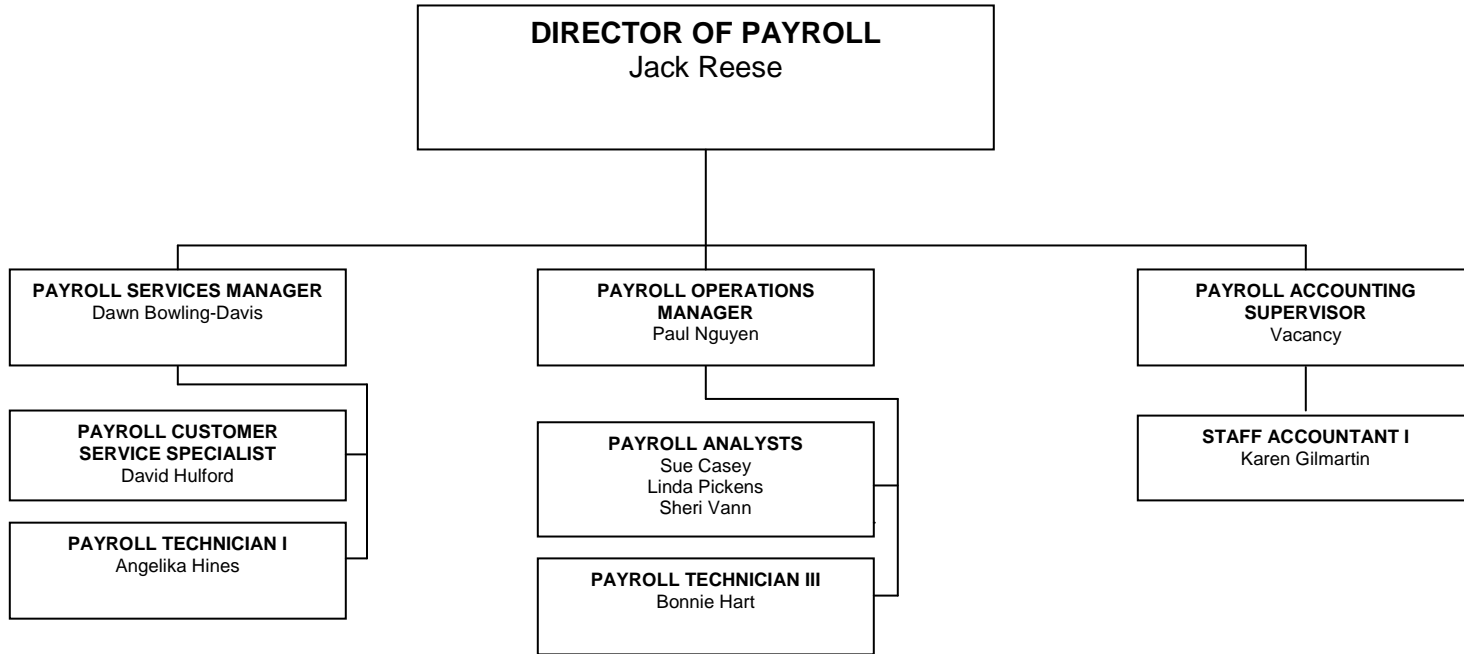
FINANCE / TREASURER'S OFFICE



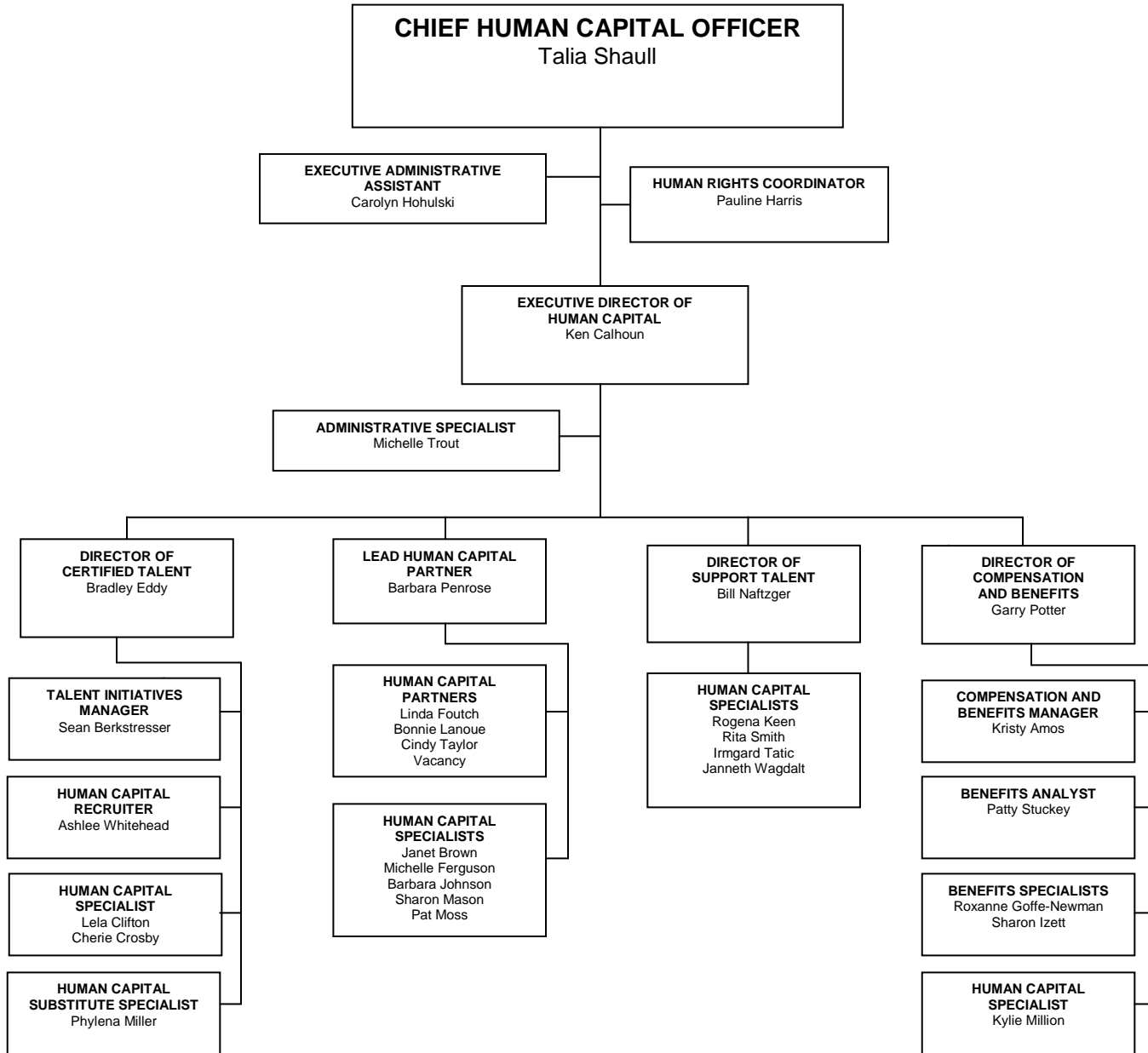
MATERIALS MANAGEMENT OFFICE



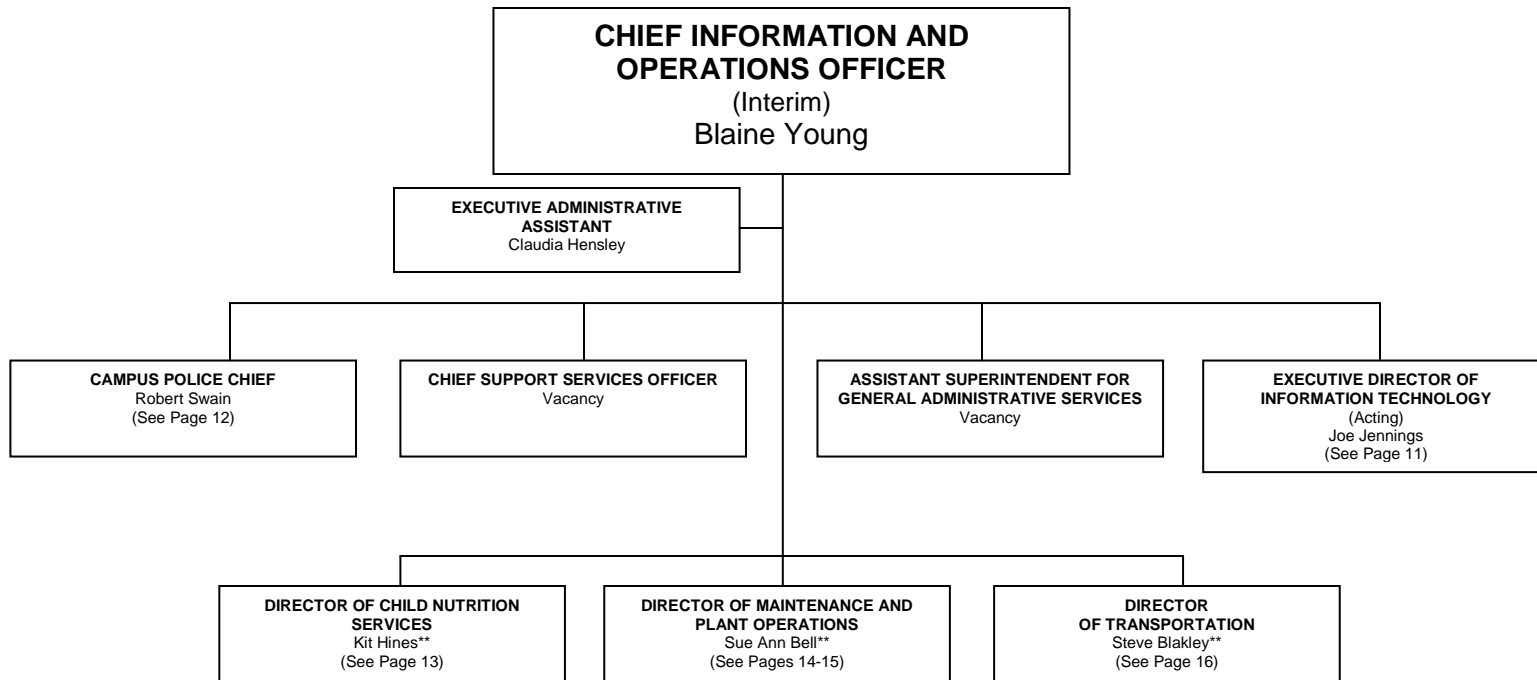
PAYROLL OFFICE



HUMAN CAPITAL



INFORMATION AND OPERATIONS



INFORMATION TECHNOLOGY

**EXECUTIVE DIRECTOR OF
INFORMATION TECHNOLOGY**
(Acting)
Joe Jennings

ADMINISTRATIVE ASSISTANT IV
Vacancy

BUSINESS SERVICES

**DIRECTOR OF
BUSINESS SERVICES**
(Acting)
Charlotte Manning

PROJECT MANAGER
Vacancy

PROJECT MANAGER
Jim Williams**

REQUISITION CLERK
Tonja Sweet**

ADMINISTRATIVE ANALYST
Jeana Gee

PRINT CENTER

**INTEGRATED ACCOUNT
MANAGERS**
Thomas Baggett**
Mike Olsen**

SERVICE DELIVERY MANAGER
Tom Fogger**

GRAPHIC DESIGNER
John Morgan**

SENIOR ONSITE SPECIALIST
Jim Stone**

SUPPORT SPECIALIST
Christian Davis**

COURIER
Terry Burwell**

CLIENT SERVICES

TECHNICAL SERVICES MANAGER
Robert Burton, Jr.

AUDIO/VIDEO TECHNICIAN
William Cardwell
Ben Tippin* *Lead

**BUSINESS MACHINES
TECHNICIANS**
Kevyn Rutherford*
Gary Winstone *Lead

COMMUNICATIONS TECHNICIANS
Roger Collier
Aaron Gallion
David Lower* *Lead

LIGHT/SOUND TECHNICIAN
Matthew Strauss

NETWORK TECHNICIANS
Robert Hunt
Matthew Reed
Tim Youngblood

PC TECHNICIANS

Justin Aldrich
Micah Beasley
Richard Childs
John Cox
Dennis Harlien
Kevin Hess
Daniel Hollaway
Andrew Johnson
Joshua Myers
Chase Ray
David Wolfe* *Lead

INFORMATION SERVICES (Applications)

**DIRECTOR OF
APPLICATION DEVELOPMENT**
Vacancy

**MANAGER OF BUSINESS
INTELLIGENCE**
Richard Butcher

APPLICATION PROGRAMMERS
Scott Bollin
Genie Howard
John Lanford
James Provenzano
Mark Thomas

**APPLICATION SUPPORT
ANALYSTS**
Kenneth Brewer
Charlette Fisher
Matthew Mills
Tammy Palmer
Terri Wensman

**SENIOR DATABASE
ADMINISTRATOR**
Dail Summers

OPERATIONS AND SUPPORT (Infrastructure)

**DIRECTOR OF
INFORMATION SYSTEMS
SERVICES OPERATIONS**
Tracy McGee

DATA ENGINEER II
Charles Diebold

**NETWORK SYSTEMS
ENGINEERS II**
Robert Clark
Willie Wesley

**NETWORK SYSTEMS
ENGINEER I**
Kevin Williams

PROJECTS ADMINISTRATOR
Orbie Edwards

**TELECOMMUNICATIONS
ENGINEER I**
William Myers

SERVICE DESK

SERVICE DESK SUPERVISOR
Linda Drink

COMPUTER OPERATORS II
Andrea Gourley
Vacancy

COMPUTER OPERATOR I
Louise Owen

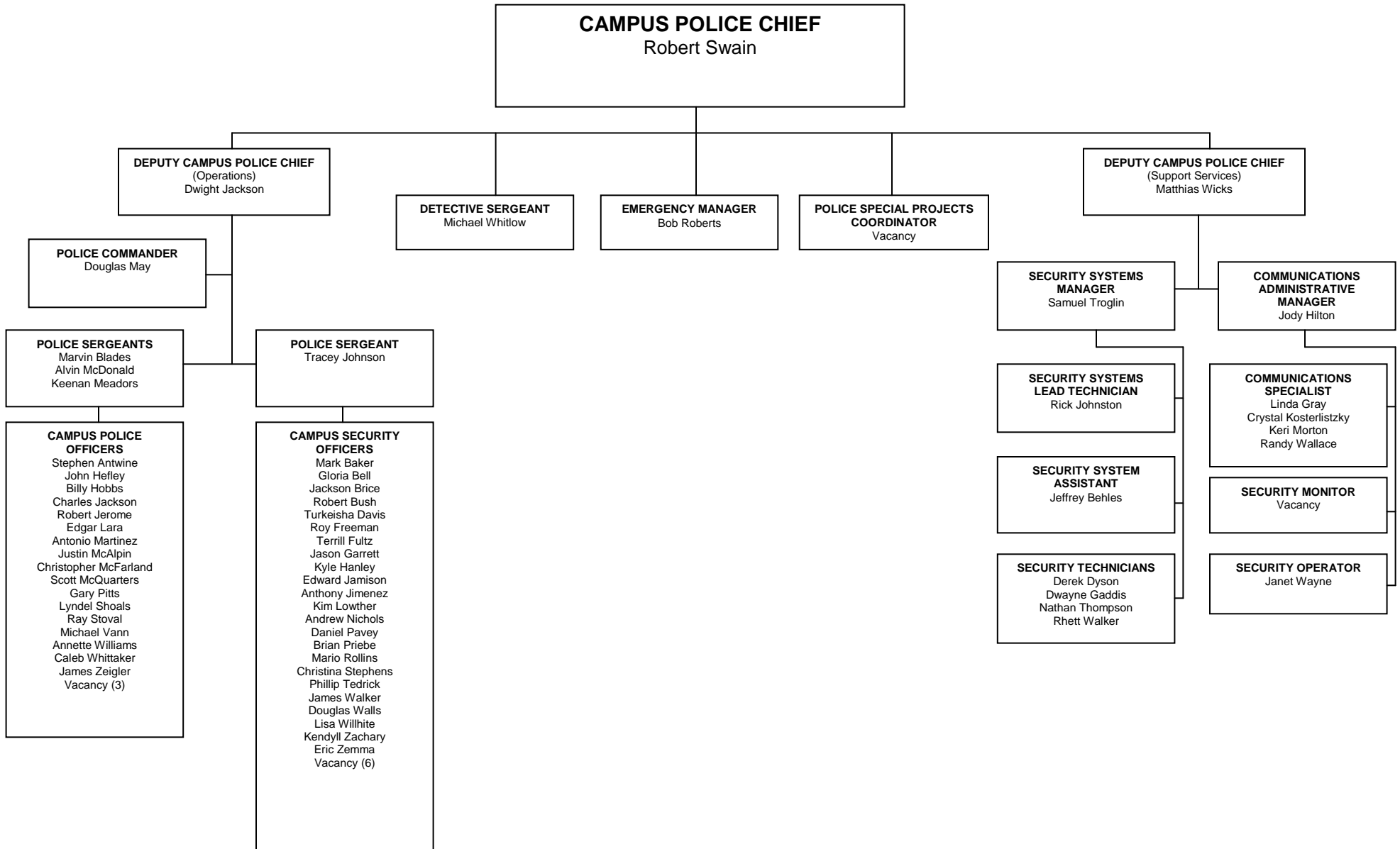
**HELP DESK LEVEL II
TECHNICIANS**
Sharon Carson
Richard Gates

HELP DESK LEVEL I TECHNICIAN
Natalie Burns

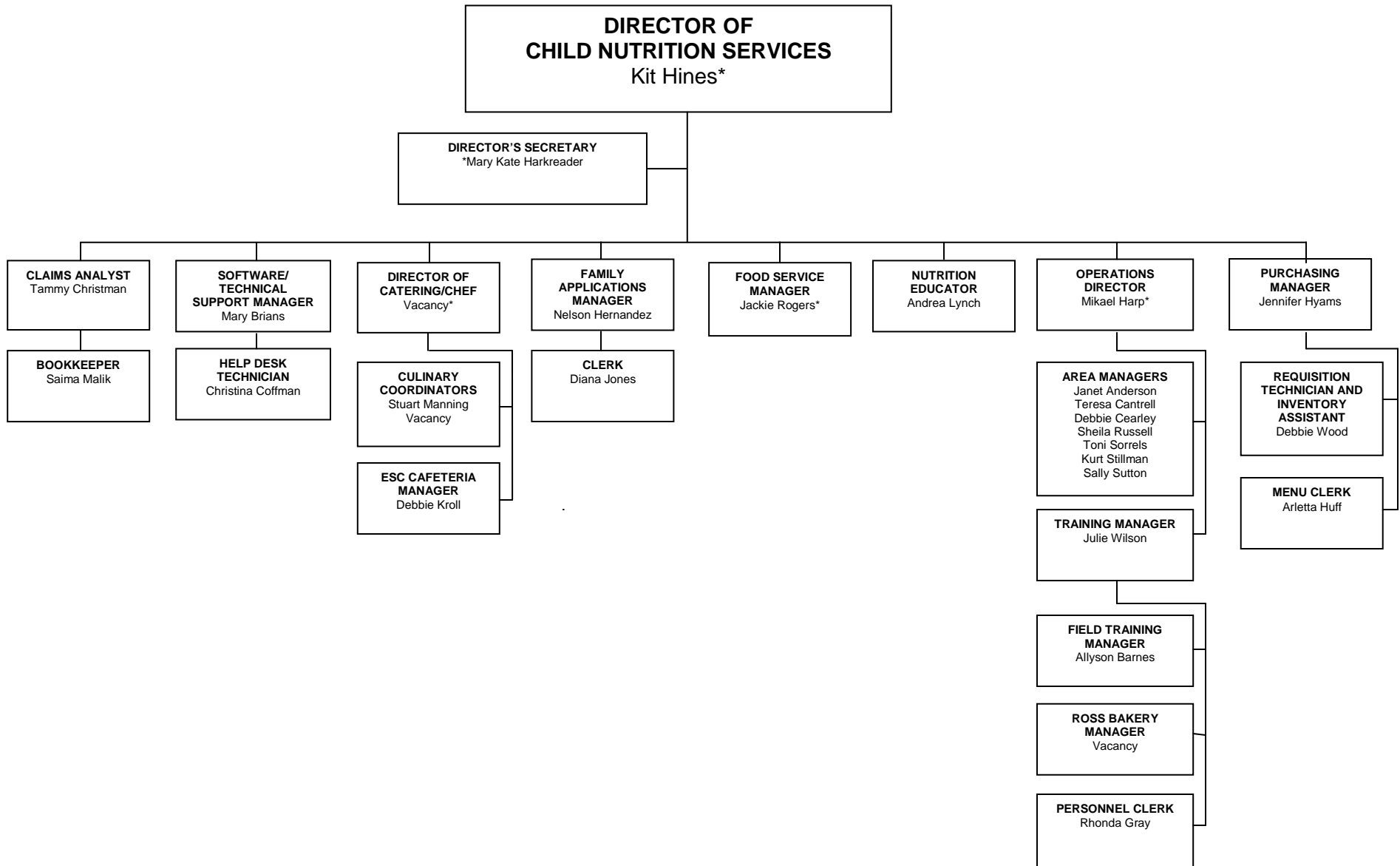
**SERVICE DESK ANALYST/
SECURITY ADMINISTRATION**
Lawanna Penny

**SERVICE DESK ANALYST/
TECHNICIAN**
Jeffery Thomas

CAMPUS POLICE AND SECURITY SERVICES OFFICE

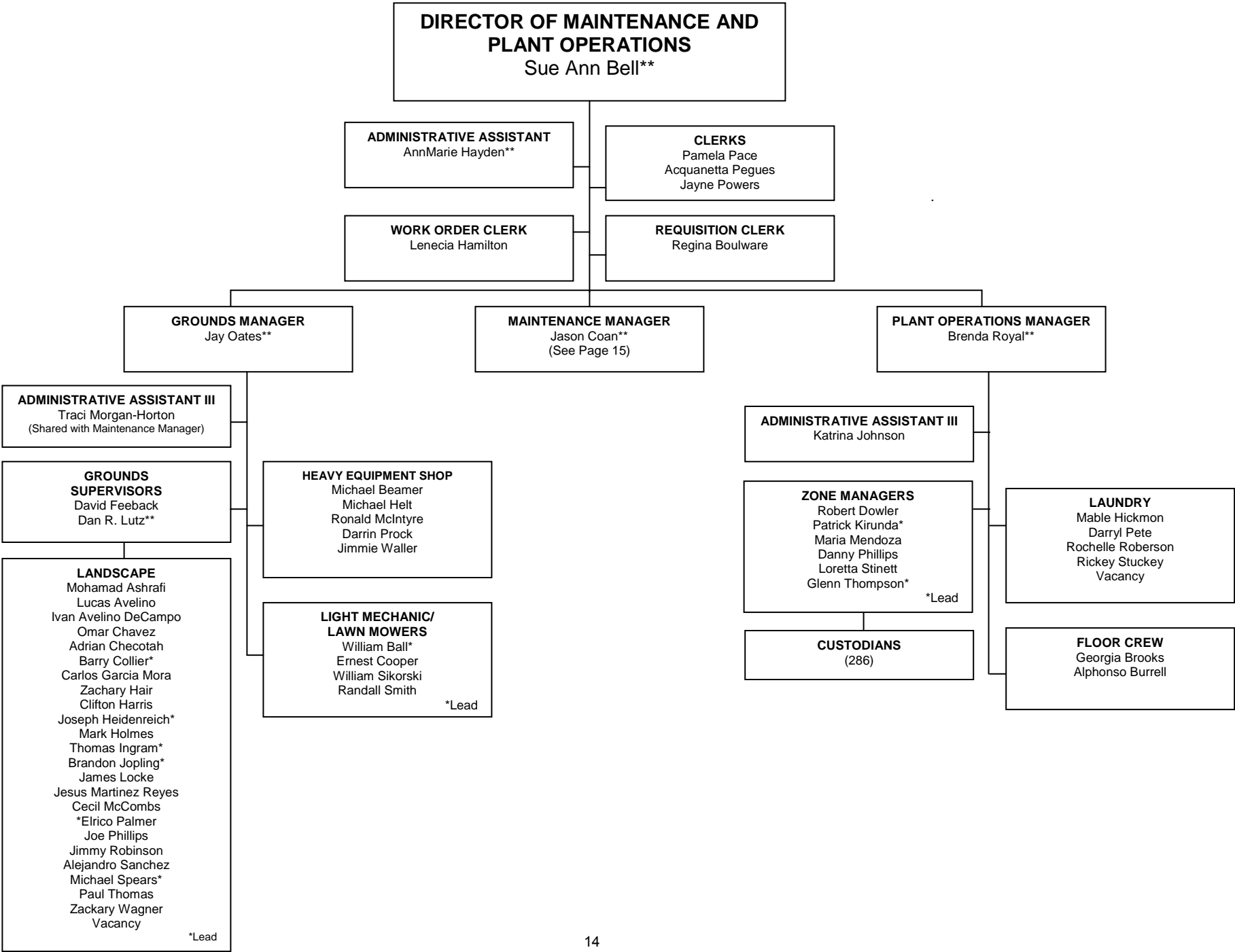


CHILD NUTRITION SERVICES OFFICE



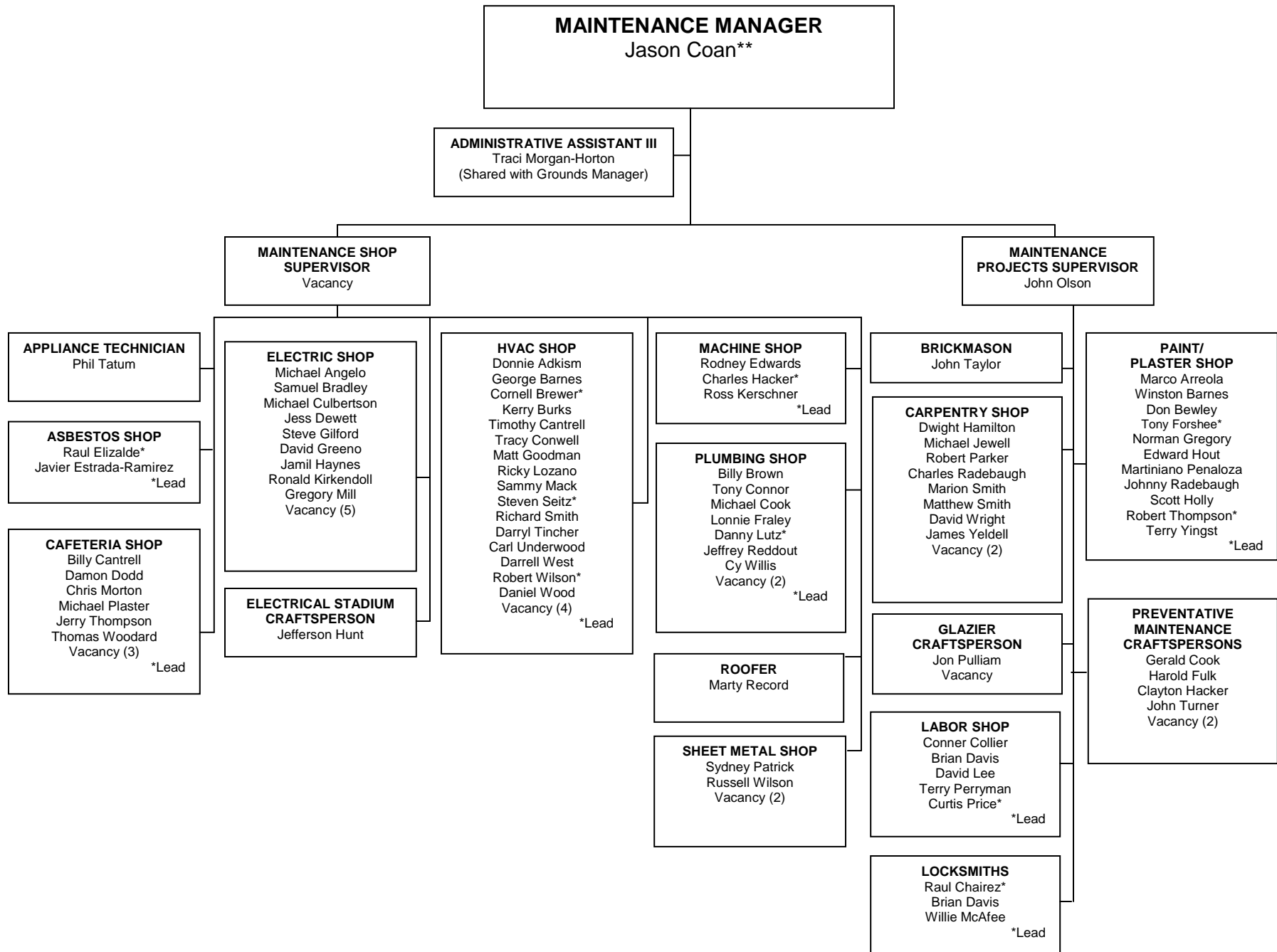
*Non-TPS (Sodexo)

MAINTENANCE AND PLANT OPERATIONS OFFICE

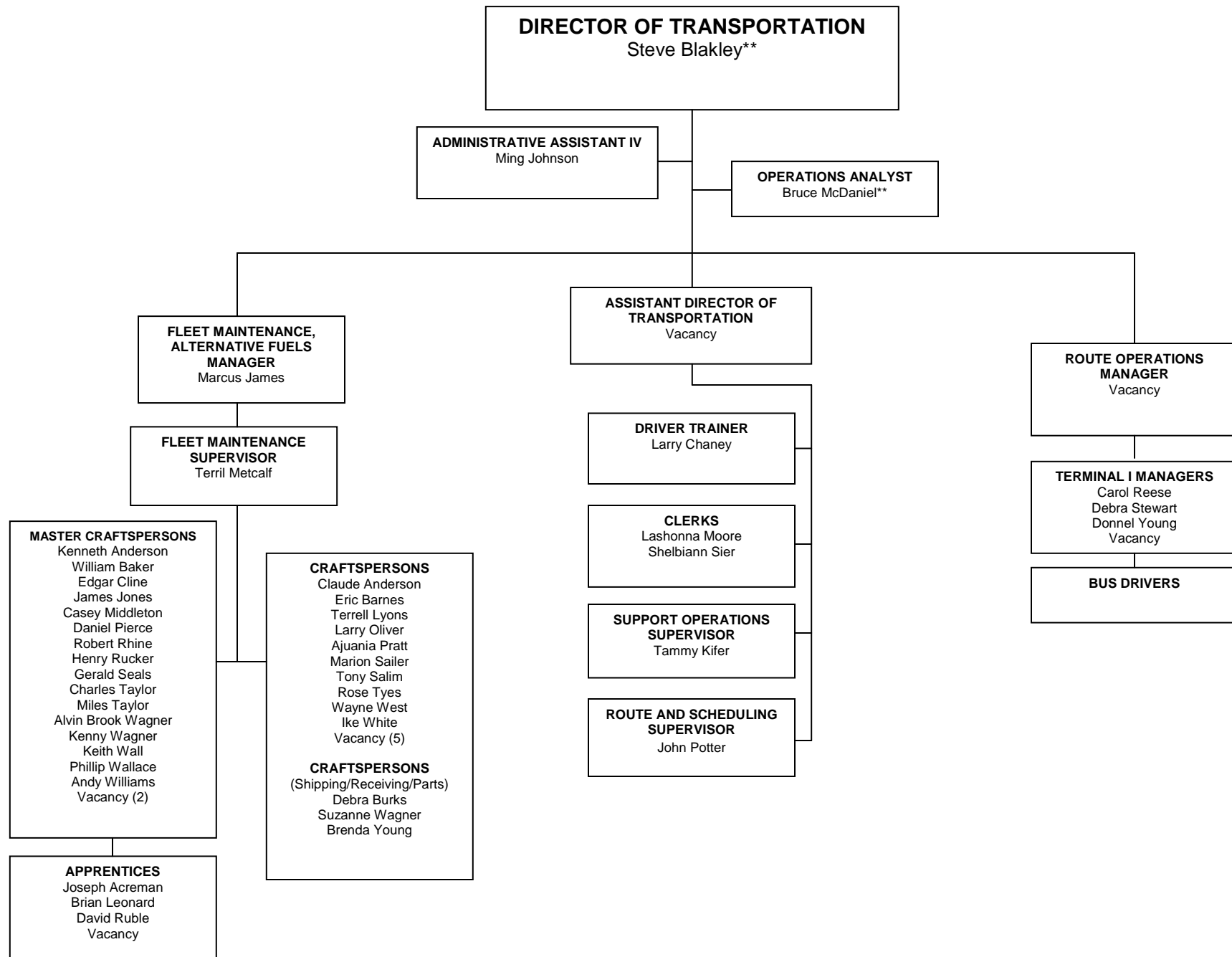


**Non-TPS (Sodexo)

MAINTENANCE OFFICE

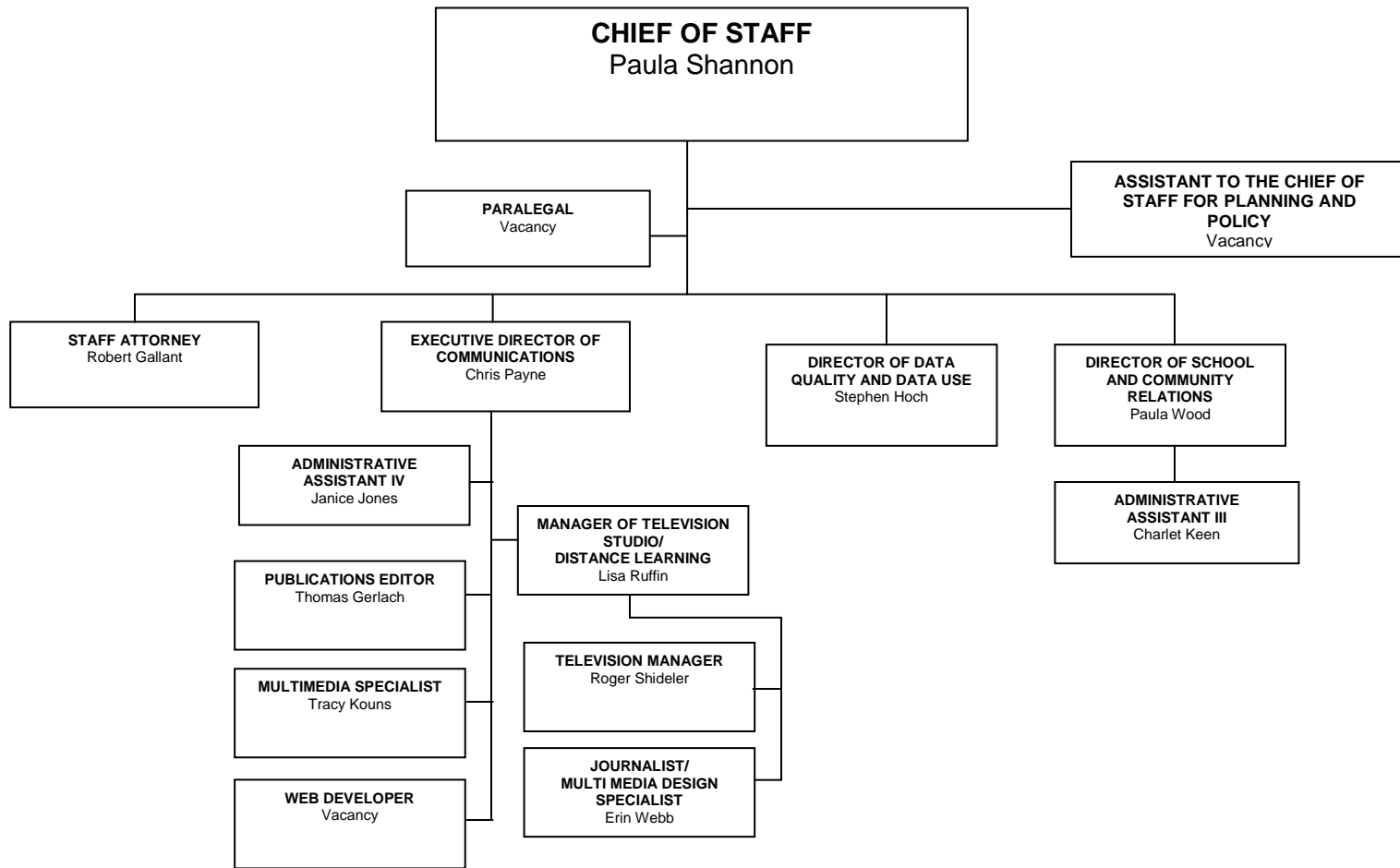


TRANSPORTATION OFFICE

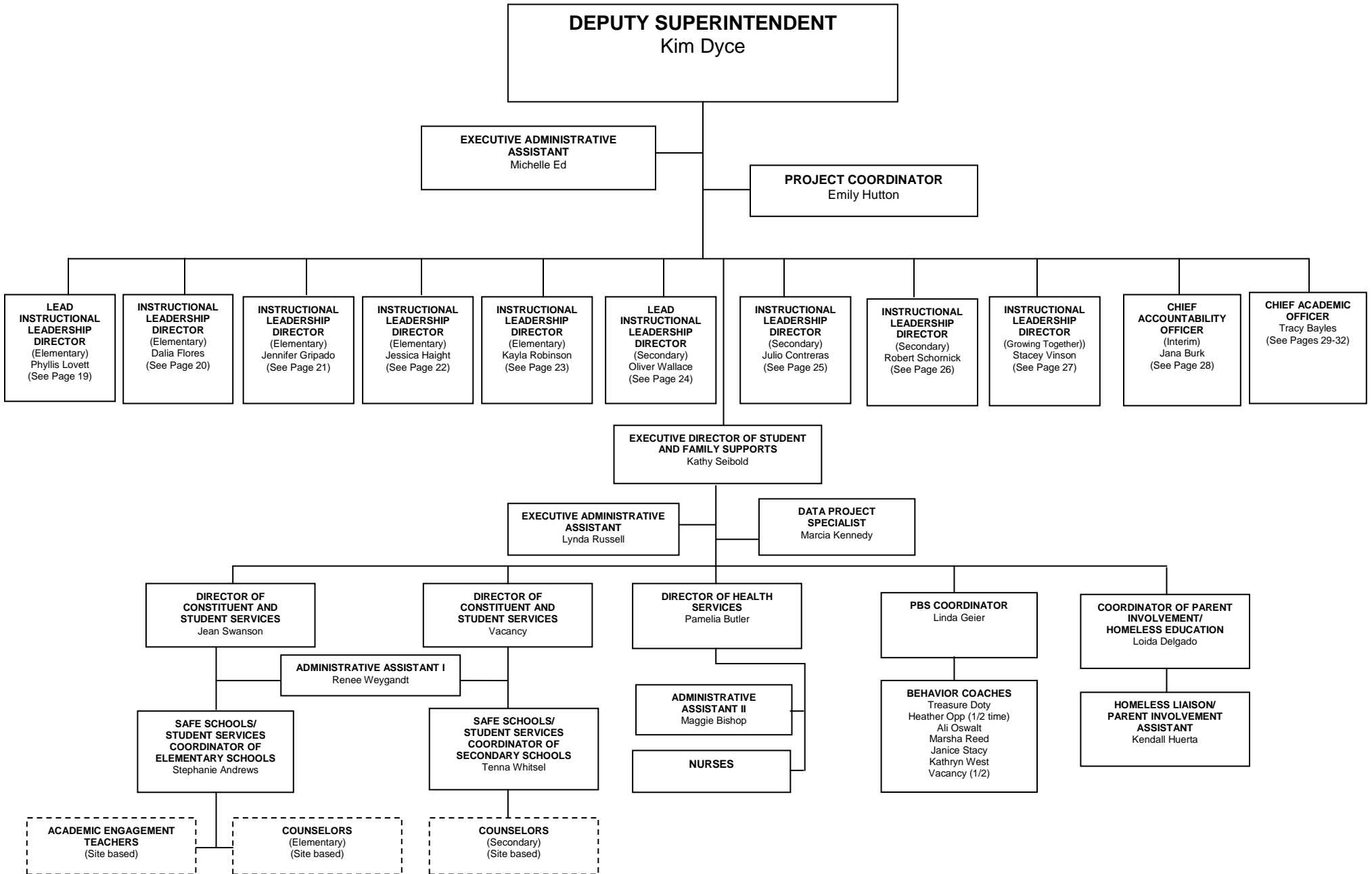


**Non TPS Employee

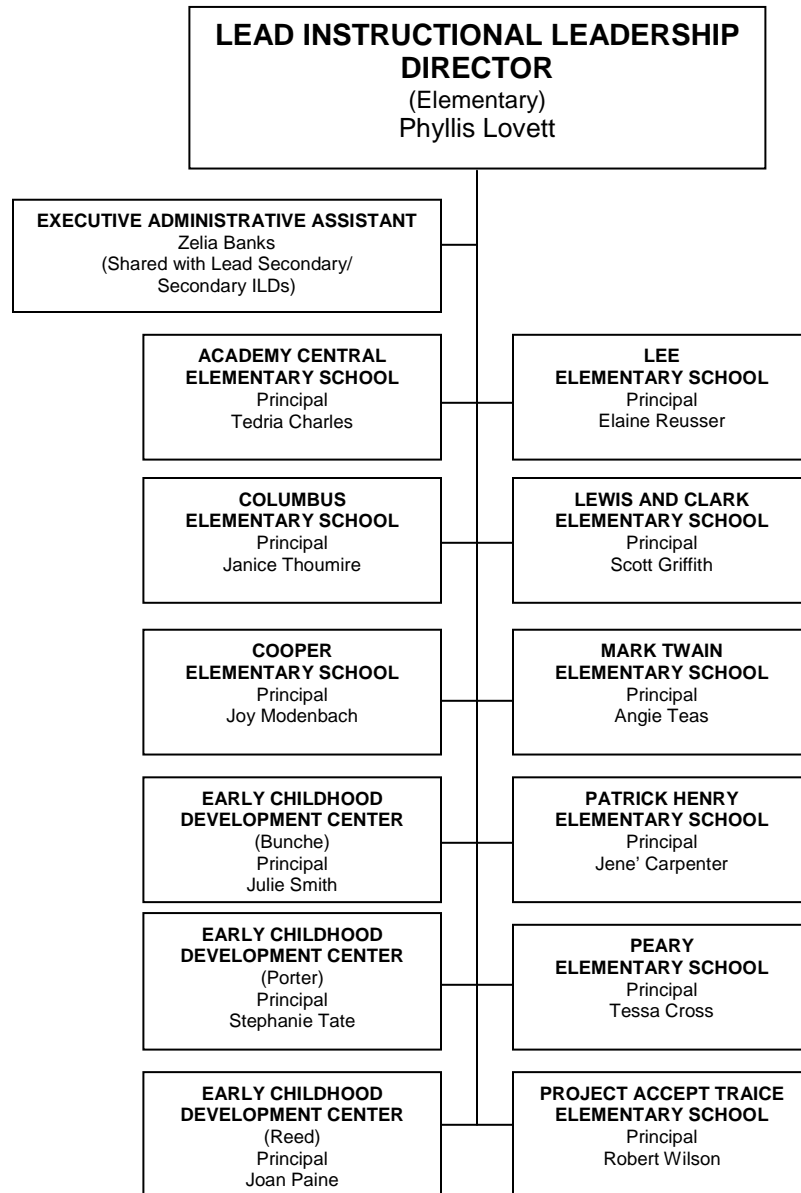
CHIEF OF STAFF



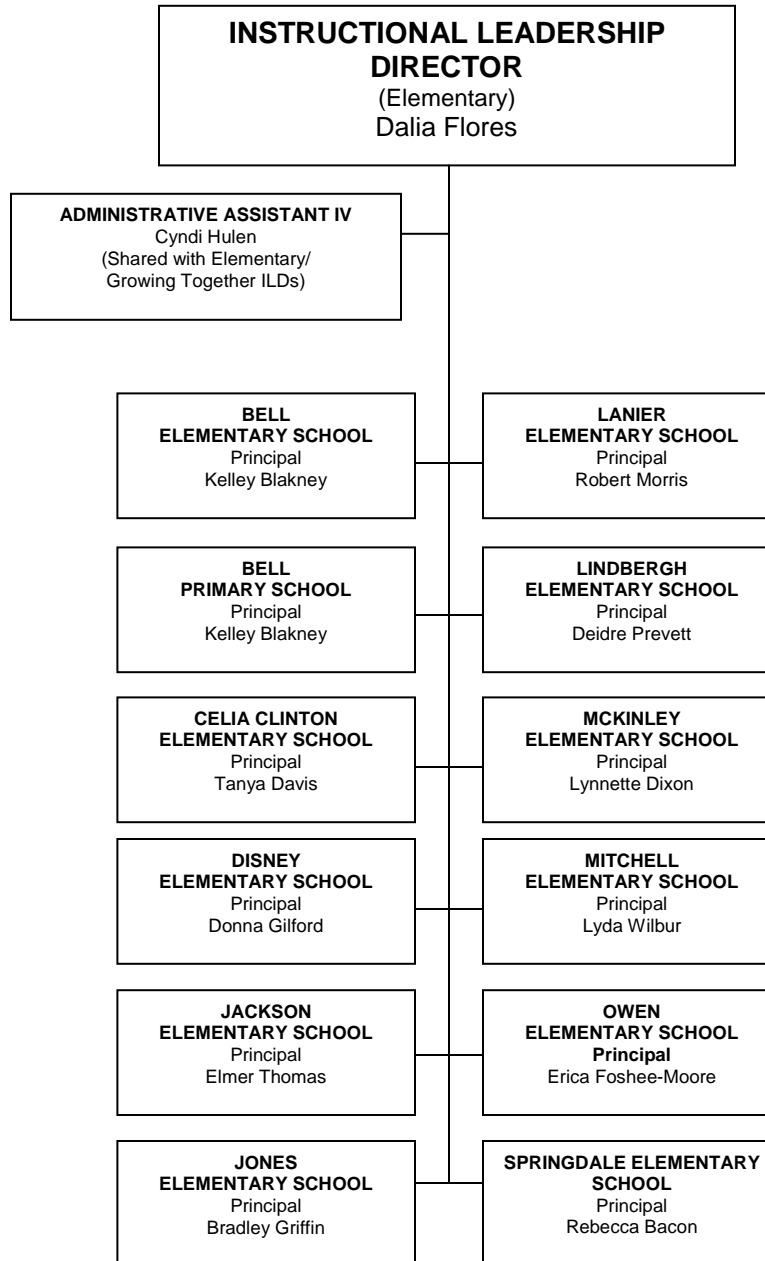
DEPUTY SUPERINTENDENT



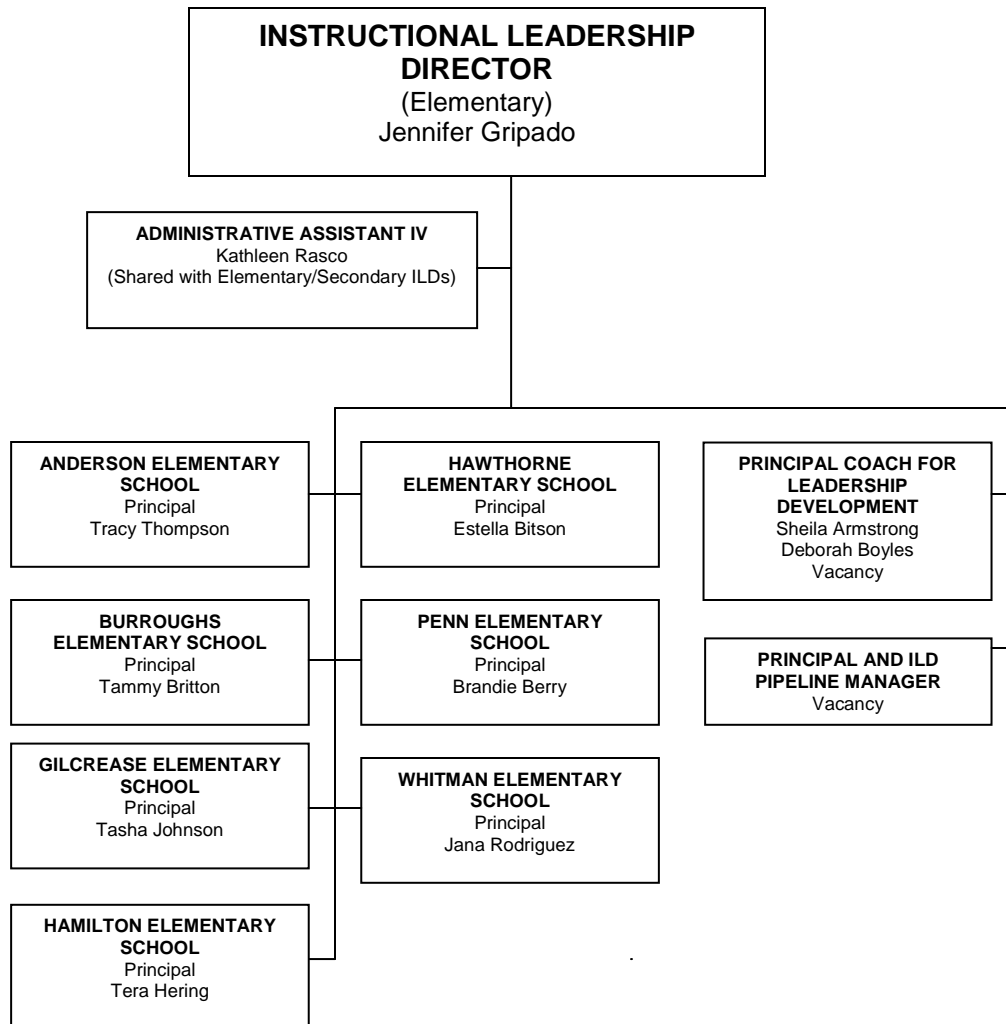
INSTRUCTIONAL LEADERSHIP



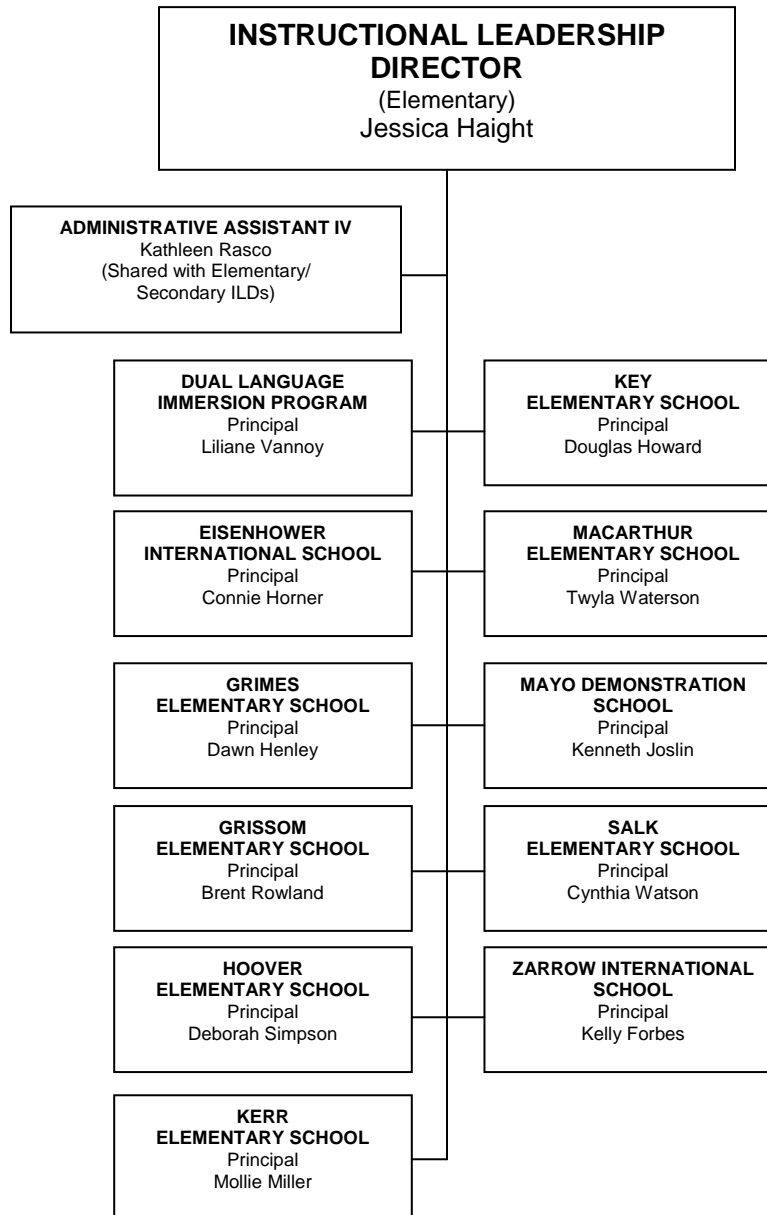
INSTRUCTIONAL LEADERSHIP



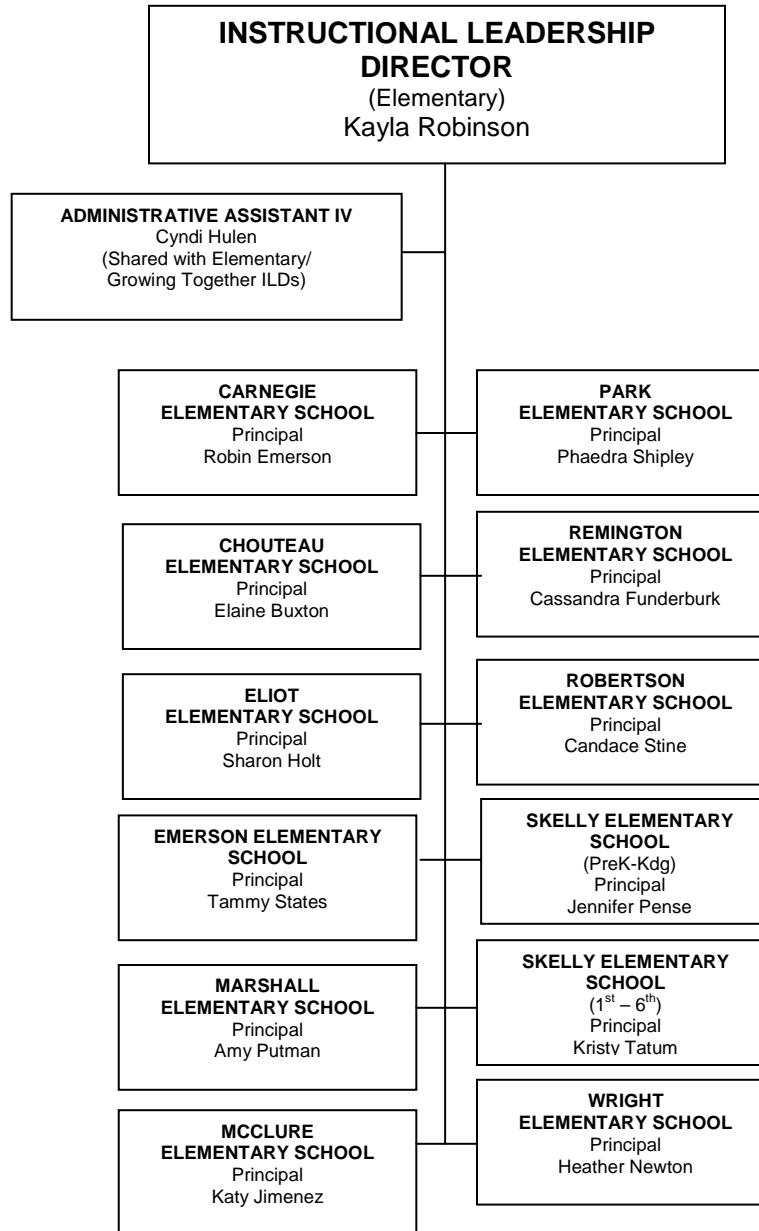
INSTRUCTIONAL LEADERSHIP



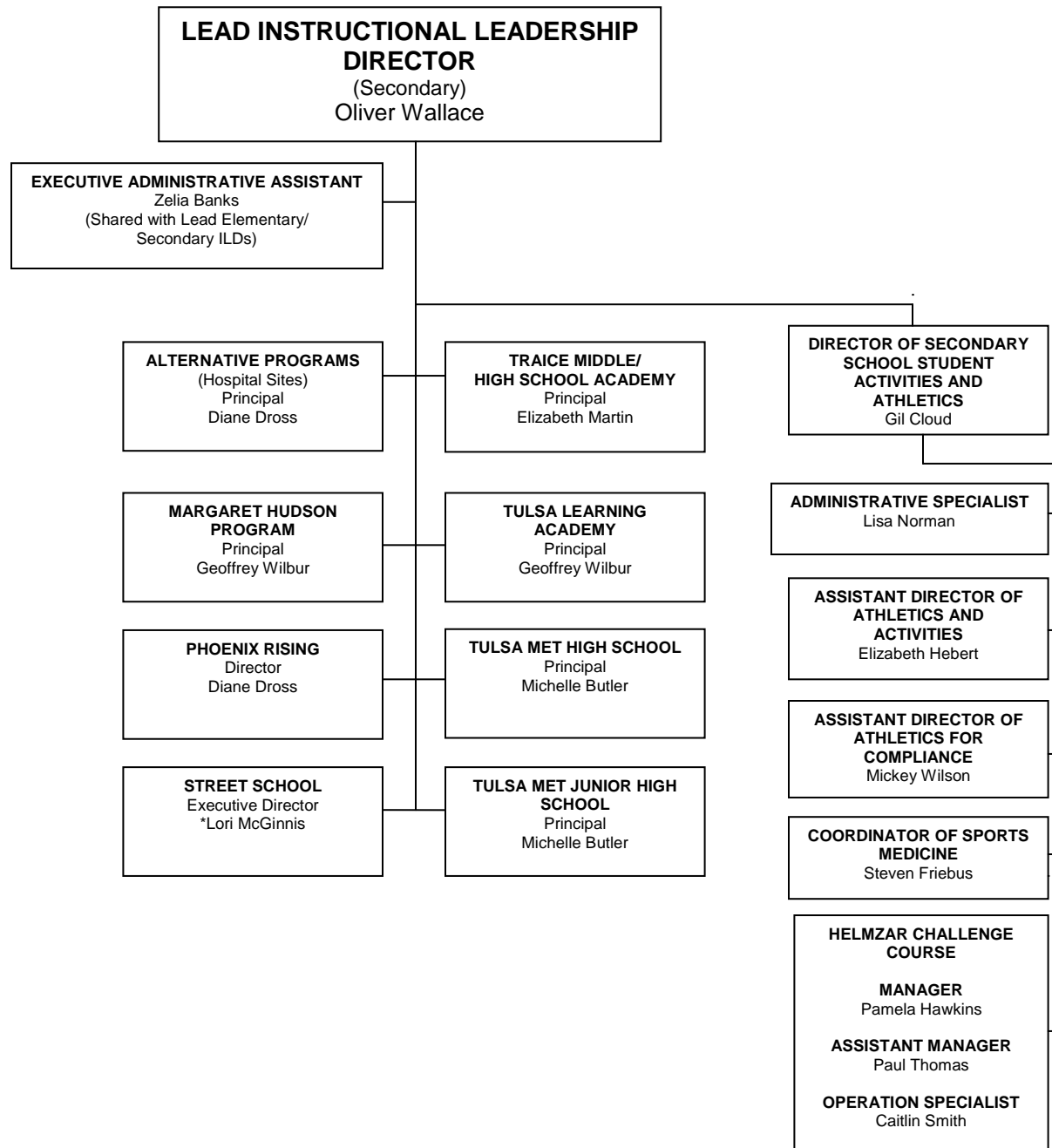
INSTRUCTIONAL LEADERSHIP



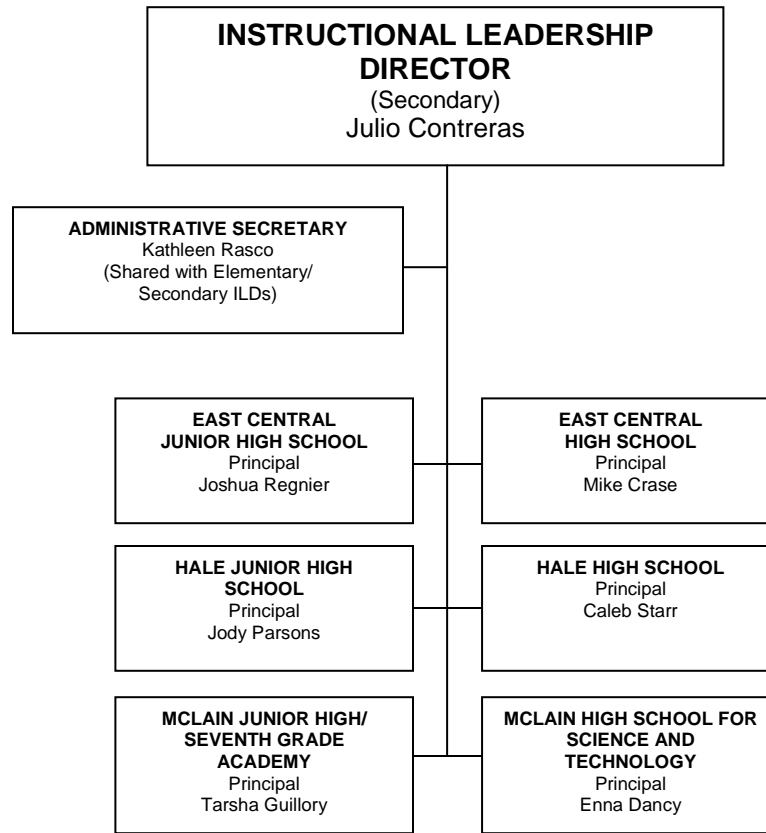
INSTRUCTIONAL LEADERSHIP



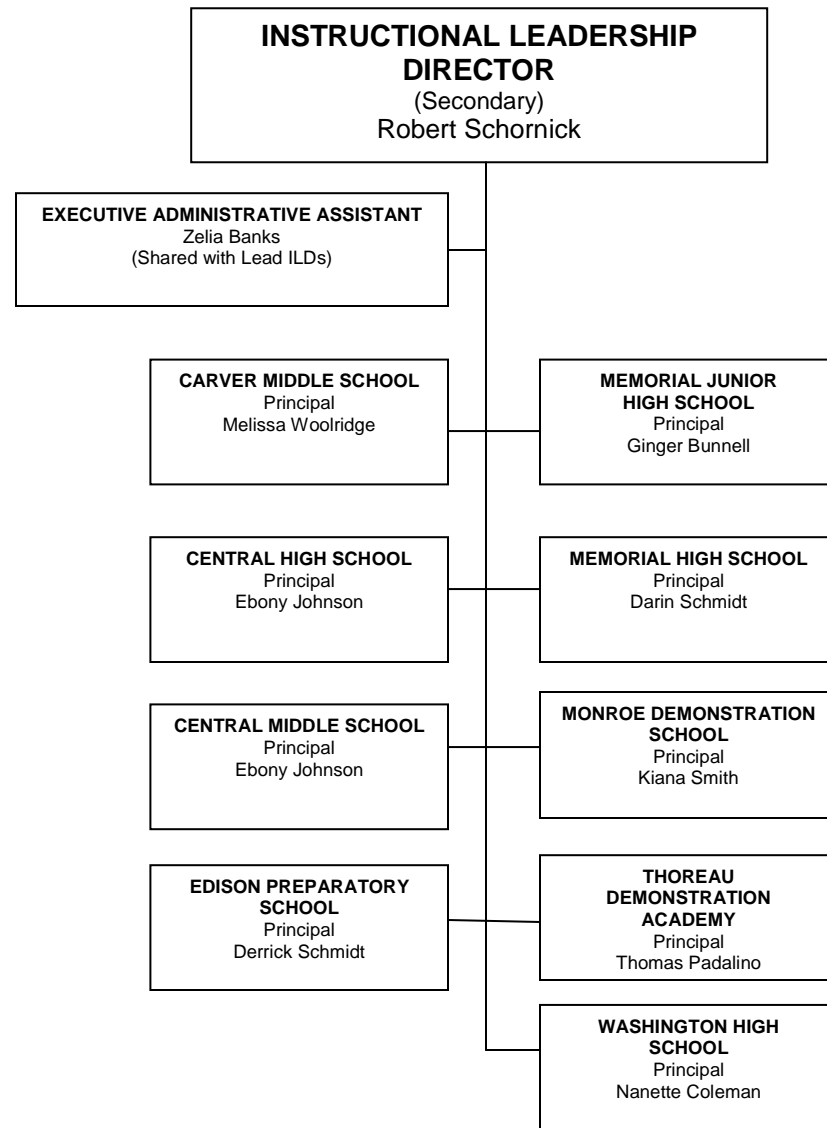
INSTRUCTIONAL LEADERSHIP



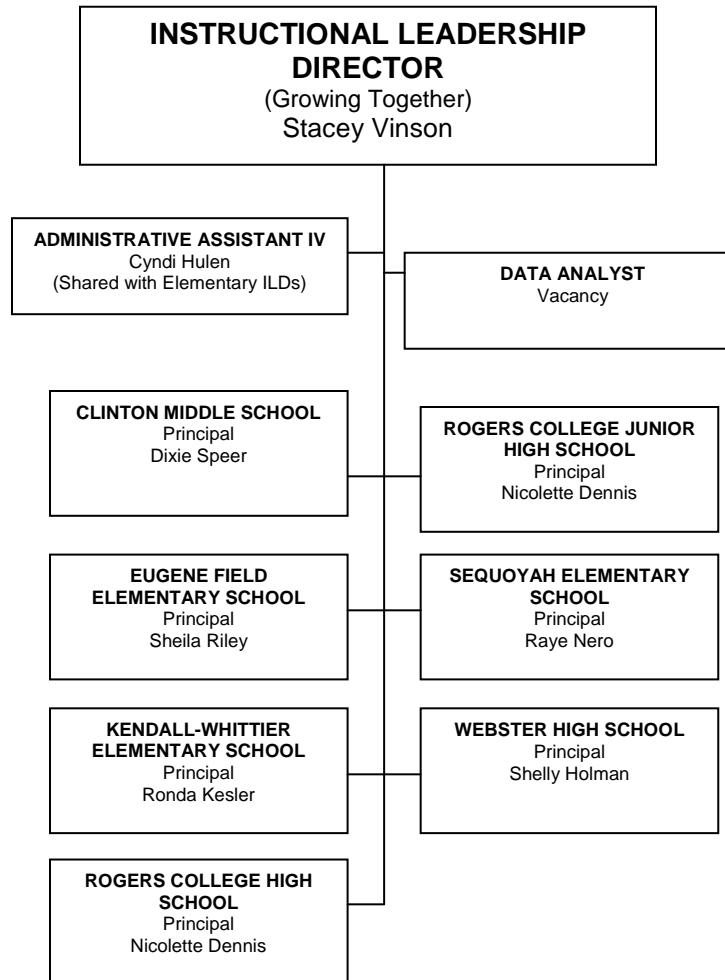
INSTRUCTIONAL LEADERSHIP



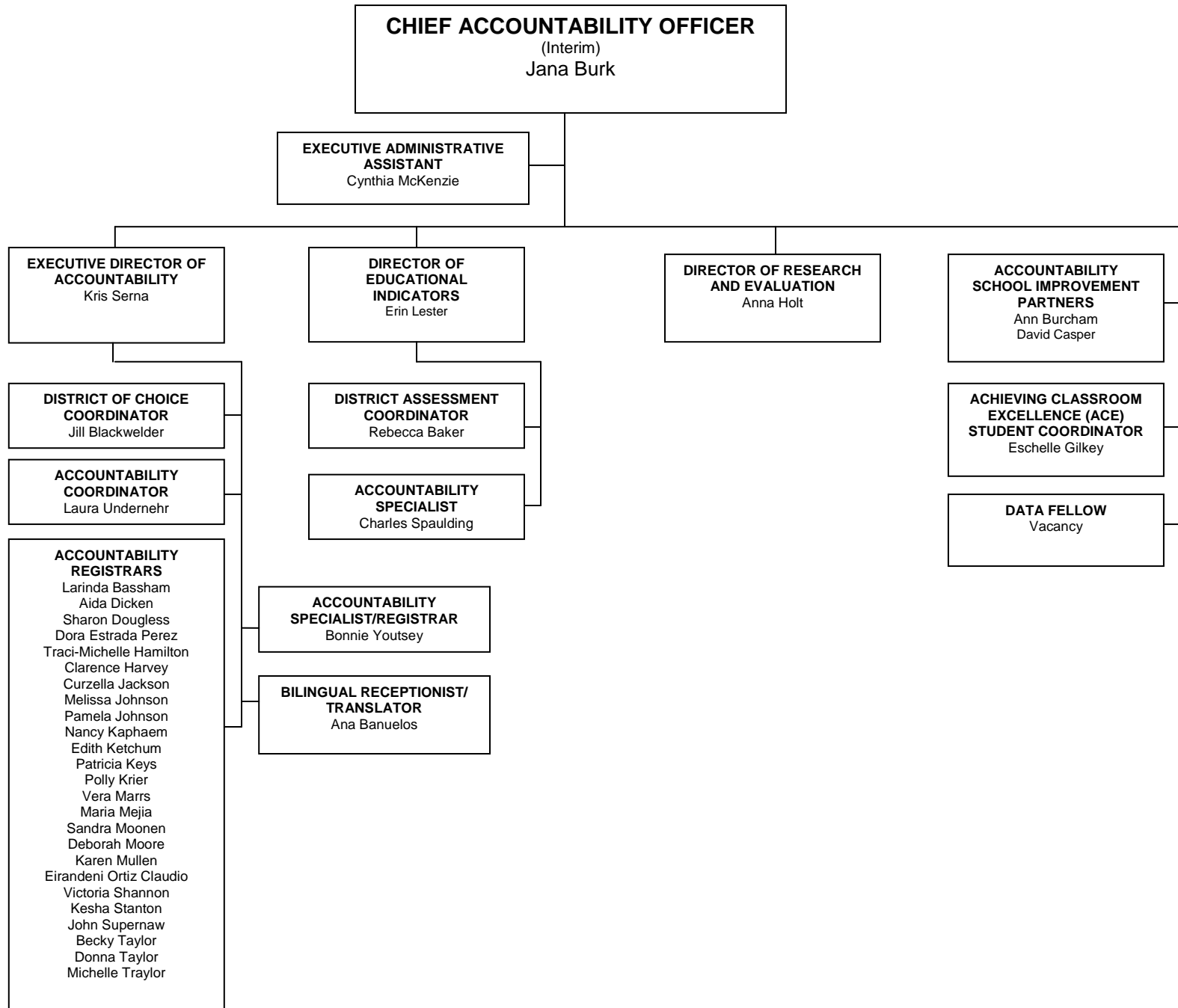
INSTRUCTIONAL LEADERSHIP



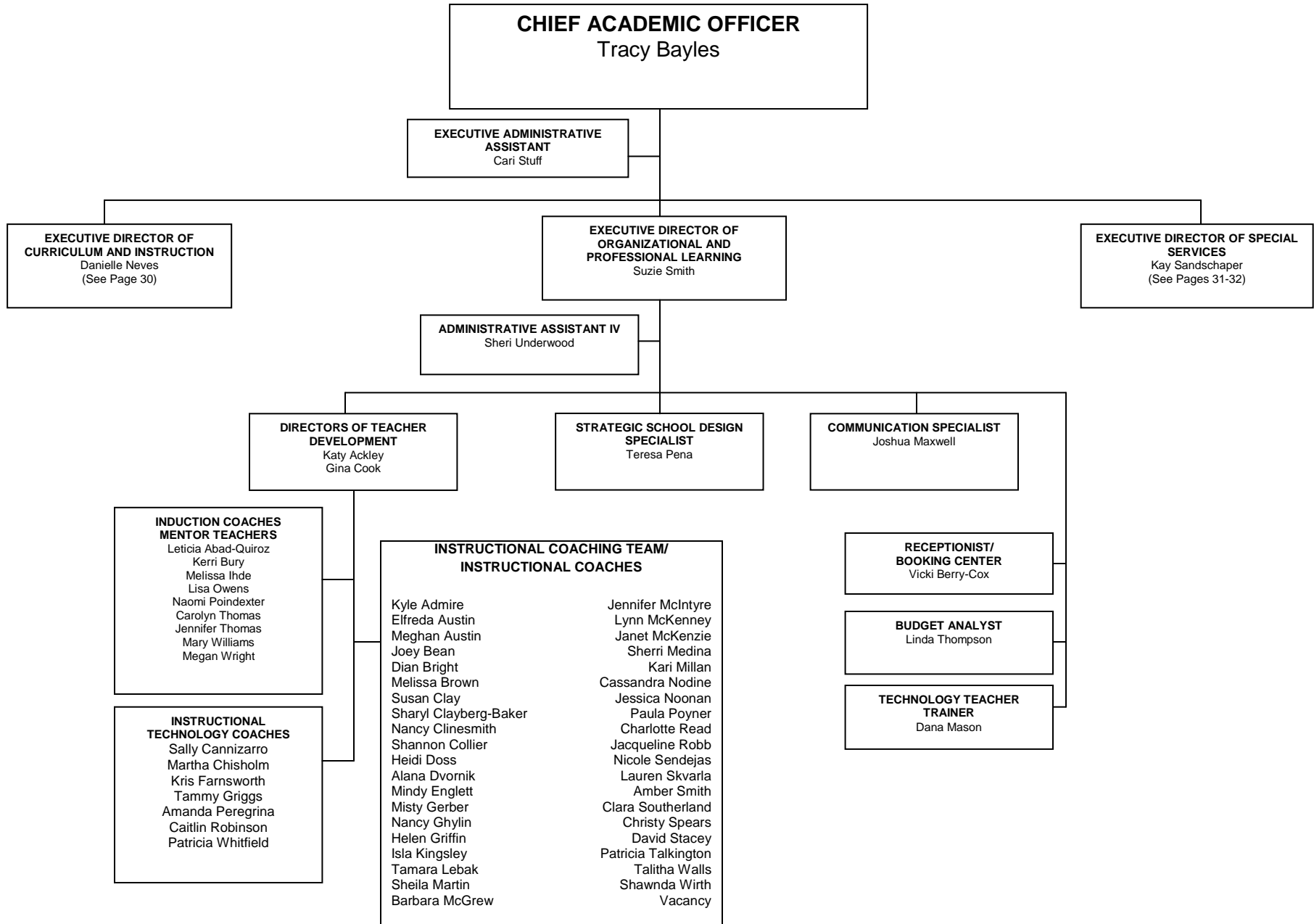
INSTRUCTIONAL LEADERSHIP



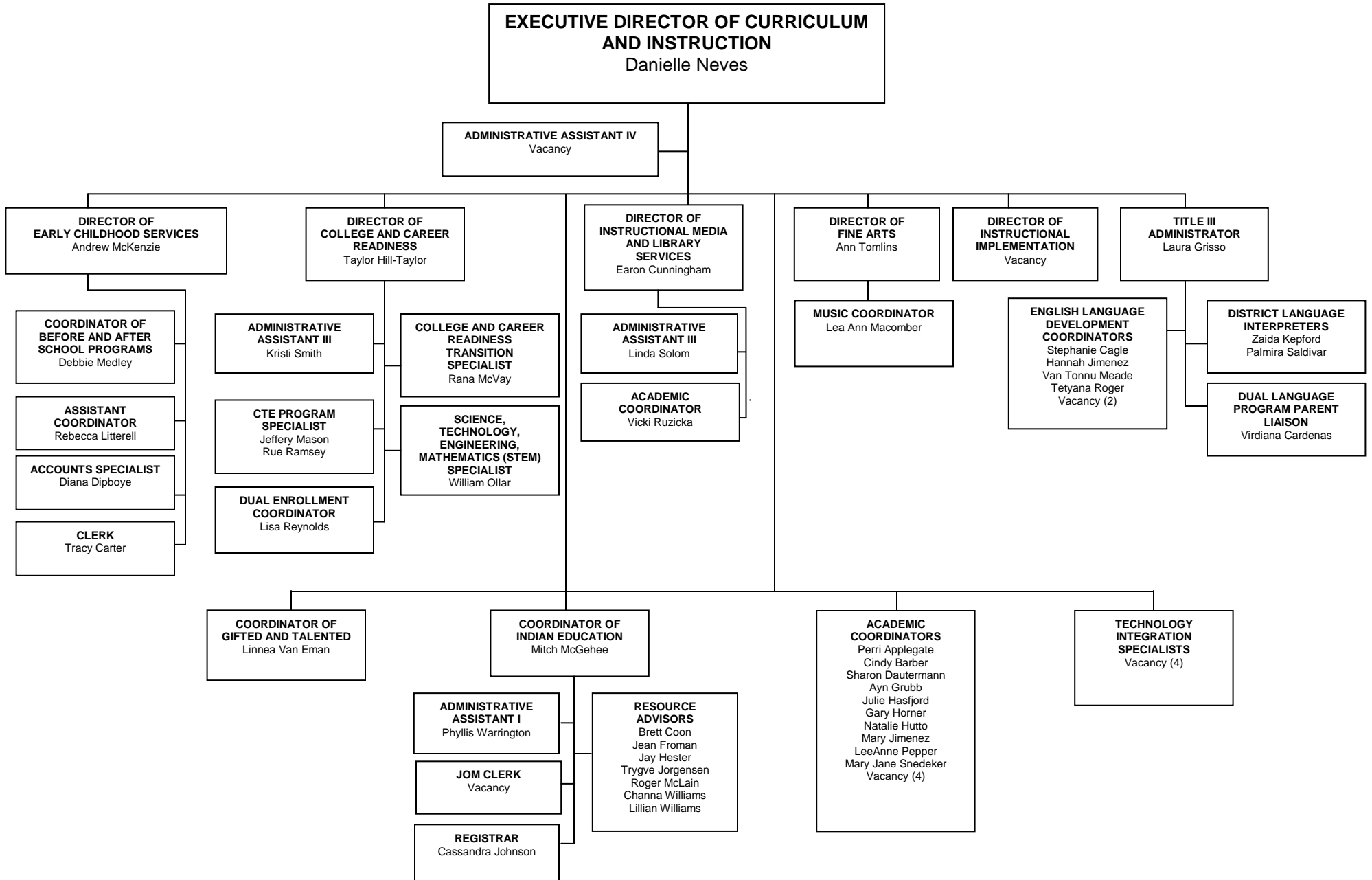
ACCOUNTABILITY



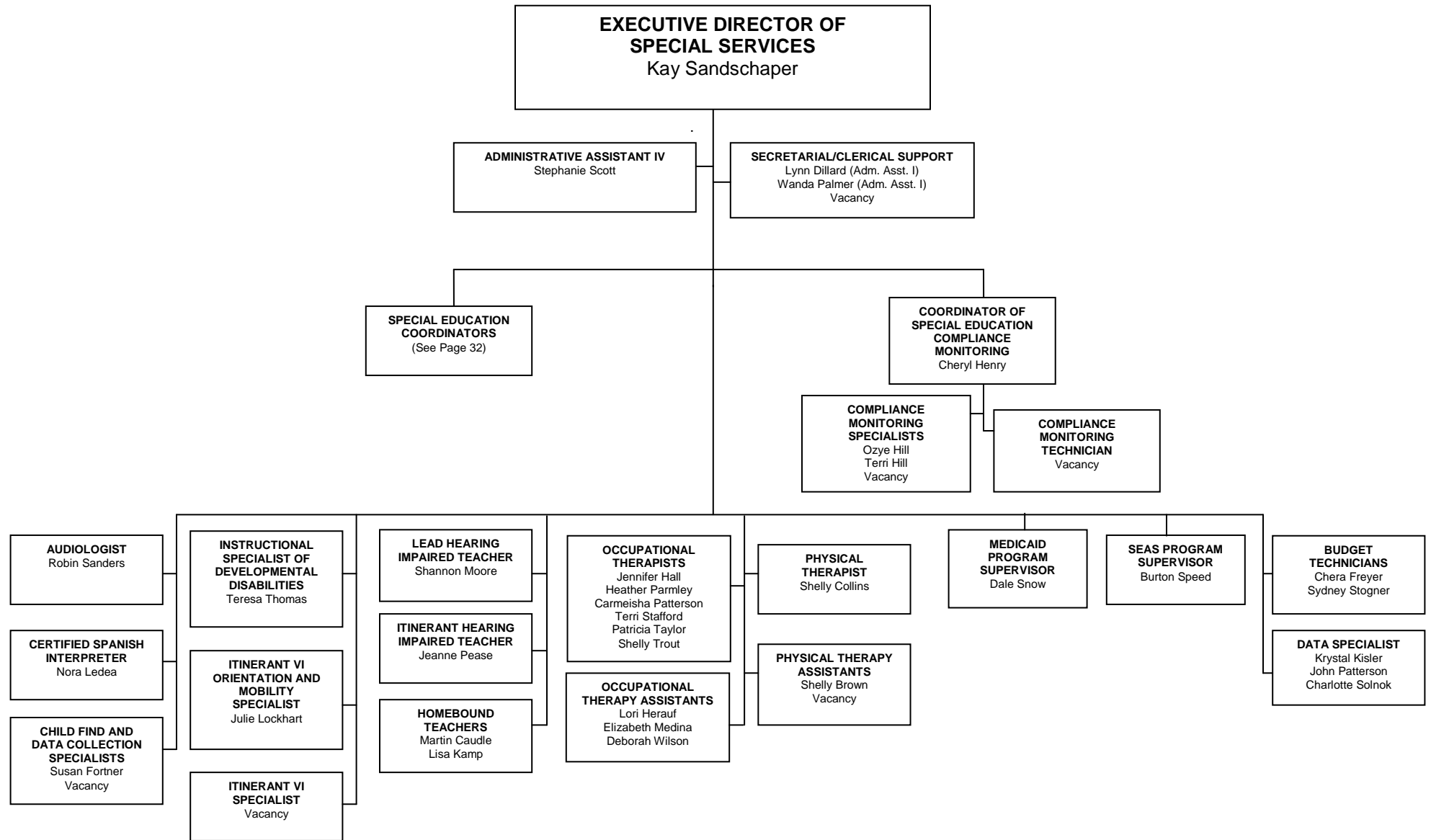
ACADEMIC SERVICES



CURRICULUM AND INSTRUCTION



SPECIAL EDUCATION AND STUDENT SERVICES OFFICE



SPECIAL EDUCATION AND STUDENT SERVICES OFFICE

