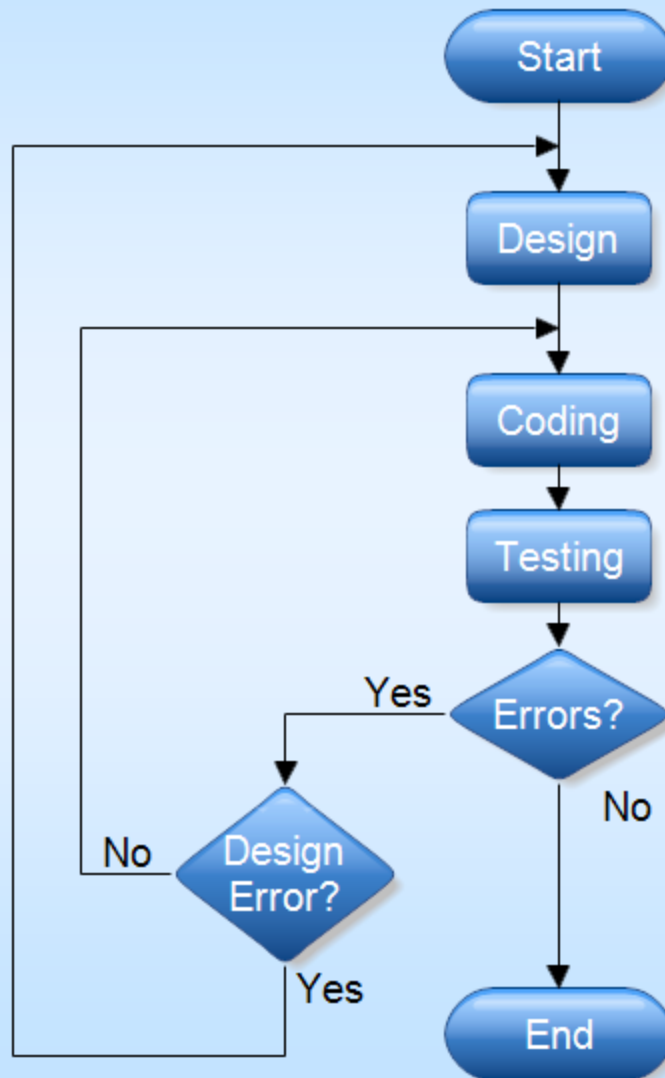


Software Development



Description

This flowchart shows the software development cycle. You basically design the system, code it and test it. When an error is found, it must be determined whether the error is a design error or not. Coding errors can quickly be fixed, but design errors may take longer.

Drawing Instructions

First version of RFFlow. It will allow you to open any chart and make modifications.

Once RFFlow is installed, you can open the above chart in RFFlow by clicking on [software_development.flo](#). From there you can zoom in, edit, and print this sample chart. It is often easier to modify an existing chart than to draw it from scratch.